

+ houses

SELECTED PROJECTS 2018-2023



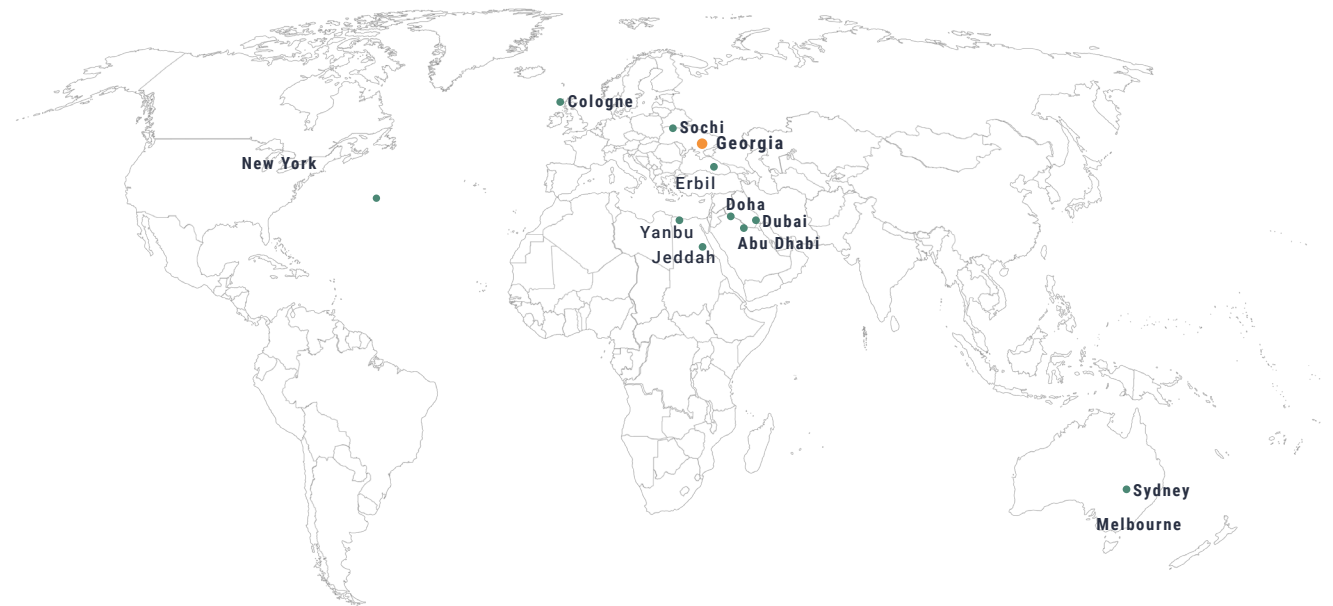
SPECTRUM
CREATING HEALTHIER ENVIRONMENTS

future
modular
digital
planning
resilience
reform



Think future

Worldwide destinations



01/08

architecture

02/08

interior design

03/08

master planning

04/08

construction management

05/08

construction

06/08

procurement planning

07/08

energy audit

08/08

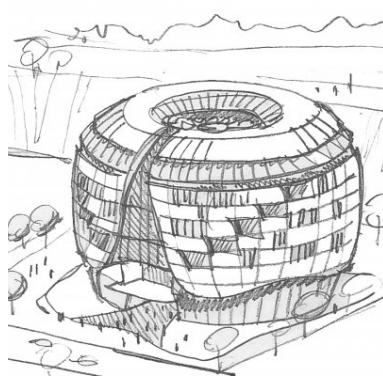
biophilic design

70+ Innovative solutions

4+ International awards

45+ Qualified employees

WHAT DO WE OFFER ?



ARCHITECTURE

We offer consolidated services of architecture – exploring new ideas, testing and analyzing various solutions, and ultimately delivering unexpected results.

INTERIOR DESIGN

Our interiors are characterized by a rigorous approach to detailing and individuality, which remains intact despite the fact of whether they are small scale renovations or large, complex commercial applications.



MASTER PLANNING

Our Master Planning capabilities produce a document that establishes a framework of the key development components that are easily understood by both clients and development authorities for their required approvals.



CONSTRUCTION

Our professionals possess the engineering and construction experience to provide realistic, cost-effective solutions to the everyday challenges that owners, contractors, engineers, and architects face throughout the construction process.



METHODOLOGY AND APPROACH

APPROACH

One of the key aspects and characteristics of our methodology is the deep understanding and consideration of the project location, its traditions, culture and surrounding context.

This gives us the ability to clearly analyze the specific parameters of any given location, its function and create unique designs that can seamlessly blend within the given context. Thorough consideration of ecology, environment, local context and traditions are the core and start point for the formation of any project.

CHARACTERISTICS

Our design work is characterized by strong conceptual design legibility, innovation and a rigorous approach to detailing

All underpinned by the principles of humane, enduring and sustainable design and never-ending technical innovation. We pride ourselves on delivering sustainable solutions, stimulating environments to extend boundaries with bold and bespoke design that rejuvenate society.

INSPIRATION

Our design methodology evolves around seeking inspiration in nature whether it is texture, color, composition, lighting or general ambiance.

Design process and direction is often influenced by the surrounding context of the landscape as we admire all the nuances and details seeking to incorporate within our design.

SUSTAINABILITY

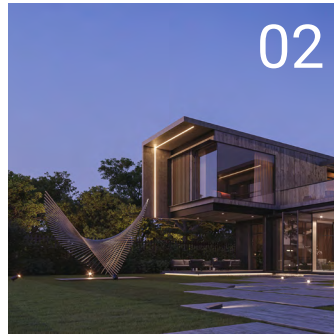
Our design philosophy is based on deep respect and consideration for our planet's well-being and resources.

Spectrum is proud to create and advance sustainable, ecologically responsible environments and enrich our projects with the latest technological solutions that ensure sustainability and growth.

SELECTED PROJECTS



Private Estate
Australia Moreton bay - 2021



Private House
Tsavkisi, Georgia - 2023



Private House
Tbilisi, Georgia - 2023



Biophilic House
Tbilisi, Georgia - 2021



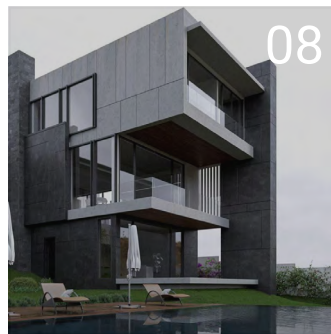
Private House
Tbilisi, Georgia - 2023



Private Estate
Tbilisi, Georgia - 2021



Private House
Tskneti, Georgia - 2020



Private House
Tsavkisi, Georgia - 2023



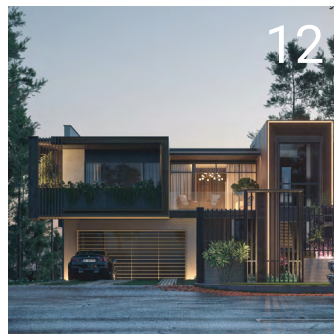
Private House
Tbilisi, Georgia - 2021



Tskneti Dwelling
Tskneti, Georgia - 2018



Private Estate
Tbilisi, Georgia - 2023



Private House
Tbilisi, Georgia - 2021



Private Estate
Tskneti, Georgia - 2021



Private House
Saguramo, Georgia - 2021



Wood Cabin
New York - 2021

01

Ocean View Residence

Australia, Moreton Bay

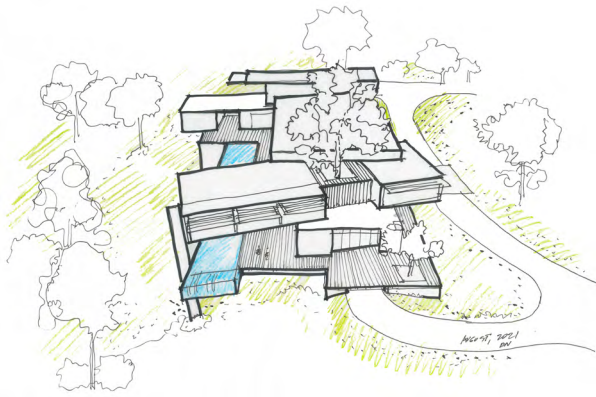
The main concept behind the design of the residential house was to create a long-term residence as an architecturally pleasing, permanent home, with the opportunity to welcome guests for a comfortable stay and host large, formal events.

Architecturally designed multi-level residence with wide sweeping open spaces and grand atrium takes the advantage of natural, raw finishes, spectacular views, function and practicality. Views are utilized throughout the residence.



CONNECTED TO NATURE

Set in Nature the project rethinks our innate biological connection with nature. Considering different patterns of Biophilic design creates urban retreat for the residents. Preserving the tree and bringing nature inside is one of the interesting design elements the house features. The atrium allows for the additional sunlight, while the natural element presents biophilic approach, highlighting the intention of creating Urban Oasis.



The sketch of the building

FACTS & FIGURES

Area **2700 m²**

Number of Storeys **3**

Services **Architecture, Interior Design**

Status **Ongoing**



Basement Basement floor allocates showroom, Board room, office, lounge and wine cellar, in line with Man's cave and cinema. The office, edge of lounge and terrace are exposed to mesmerizing caustics that is reflected from the glass flooring of the pool. This itself will become an interesting feature to observe throughout the day. The living area creates flowing, airy open space with different arrangements of living area, TV area, library with ladder, dining area and dedicated piano area that can be observed from the living room extending the sweeping view.



WHERE DESIGN COMES TO LIFE

The interplay of different materials and textures create soothing and comfortable atmosphere. Carefully selected decorations and accessories bring special charm and create unique environment.



From choosing colours, materials and finishes, through to furniture, soft furnishings, art and accessories, we bring it all together into a single cohesive, well planned and designed interior scheme.



Spectrum / Residential projects / 2018 — 2023

We aimed at harmonizing the exterior and interior, erasing the boundaries between them and creating unique space for indoor-outdoor living. We interpreted the architecture of the building as a robust, yet refined concrete structure, that is visually echoed throughout the interior from the macro to the micro, from the materials through to the color palette.

Massive terrace overlooking mesmerizing views eliminates line between indoors and outdoors. With comfortable arrangements of furniture and sunken lounge, it promotes spending maximum time outdoors. While ideal for family and friend gatherings, the arrangement is comfortable to host large parties and events.

02

Private House

Tsavkisi, Georgia

The house, designed for a young owner, combines modern, robust, and expressive aesthetics with functional considerations. It effectively distributes private and social areas in a comfortable manner, taking into account the owner's requirements and lifestyle.

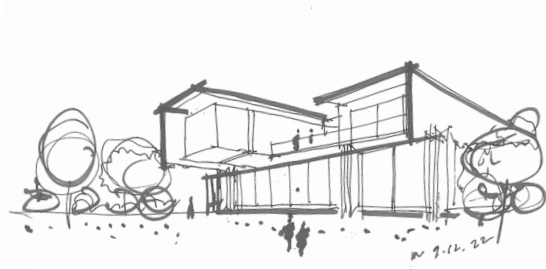
The choice of materials, including concrete, wood, and Corten steel, aims to harmonize with the surrounding landscape while reflecting the client's preferences.



ROBUST CHARACTER

The minimalist aesthetics exude a warm, earthy, and traditional essence, offering a visually calming experience. The strategic placement of sliding glass doors and oversized windows allows ample sunlight to illuminate the interior while seamlessly connecting it with the external surroundings.

The walls of the house are constructed entirely from board-marked concrete, which not only complements the natural environment but also extends the visual connection between the inside and outside spaces.



The sketch of the building

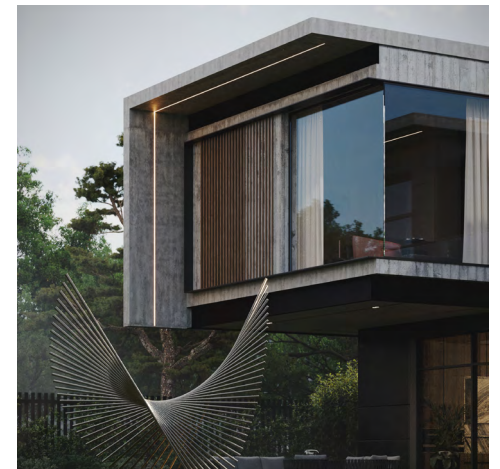
FACTS & FIGURES

Area **877 m²**

Number of Storeys **2**

Services **Architecture**

Status **Completed**



Inside, a consistent palette of materials and design details unifies the various spaces. Black floor tiles and suspended wooden cabinetry contribute to the overall aesthetic. A wooden bar area extends into the living space, echoing the angular forms of the building's exterior.



The contrast between the robust concrete walls and the generous use of glass creates a visually striking effect. The abundant natural light and constant visual contact with the lush vegetation outside enhance the overall experience. Modern art elements further enrich both the exterior and interior, adding a special spirit and character to the residence.

Spectrum / Residential projects / 2018—2023

03

Private House

Tbilisi, Georgia

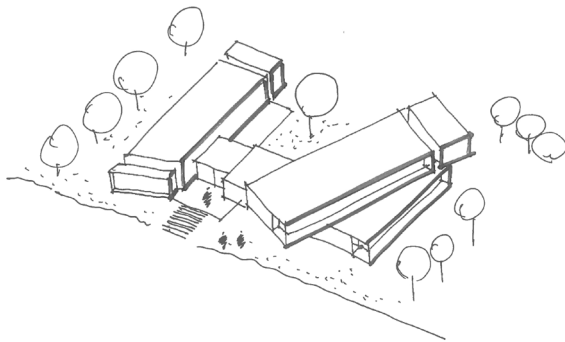
Built in a breathtaking location by the Lisi Lake, this private villa's architecture has innovative features and has successfully harmonized its form to the respective context. The villa's spatial formation is uniquely influenced by its dynamic form, resulting in a contemporary masterpiece that is both striking and functional.

The solid surface cladding used brings a sense of privacy and safety to the house and also establishes interesting solid-void (light and shadow) encounters with daylight.



THE CONCEPT

The project's concept brings elegance through simplicity as the exterior blends sleek lines with a neutral color palette. The plan has evolved through a series of functions after carefully considering the functionality and practicality of the villa. The project's spaces were designed by changing the development strategy accordingly which enabled the creation of diverse spaces as per the user's specific desires.



The sketch of the building

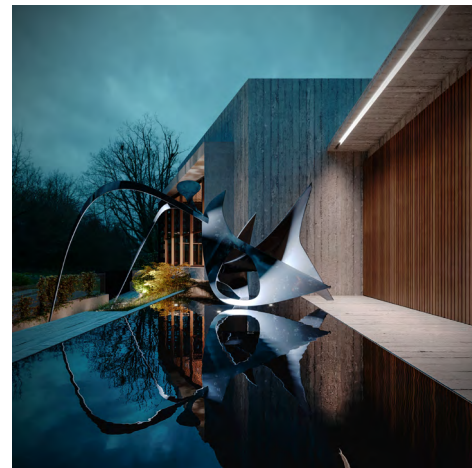
FACTS & FIGURES

Area **550 m²**

Number of Storeys **3**

Services **Architecture**

Status **Ongoing**



The project's design has been characterized by three distinct volumes, where one volume is cantilevered diagonally on the top which adds extra complexity to the structure. These masses are placed to create a unified look that is further spatially connected. The exterior is made of vertical divisions of dark grey concrete that contrast smoothly with the tight rhythm of the timber cladding, which bring in warmth and sophistication.



The façade has been designed using alphabets and symbols from the Georgian language to create a sense of unique identity. The characters were placed in such a way that it creates a sense of rhythm and progression across the exterior.

During the day, natural light rays enter into the house through the perforations and give rise to an interesting play of shadows; while artificial lighting pierces out during the night and hence makes the façade change dynamically during different times of the day.

04

Biophilic House

Tbilisi, Georgia

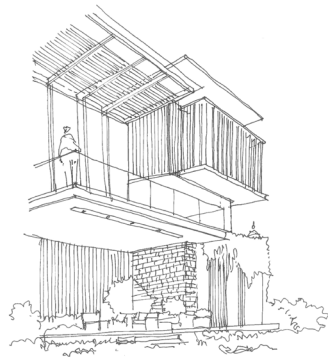
The main intention behind the design was to create a biophilic house that would provide maximum comfort to the users and reconnect them to nature. Set in Nature the project rethinks our innate biological connection with nature.

Considering different patterns of Biophilic design creates an urban retreat for the residents. We have challenged ourselves to create a private sanctuary that would connect to nature and let it become part of the residence.



SPECIAL CHARACTER

Natural materials are used throughout the design, both the facade and interior. Wooden texture brings soothing warmth to the private house that is enriched with natural stone and mesh covered with greenery. The Winter garden is one of the main features of the house. It is located on the second floor. Each room surrounding it takes advantage of the amazing green garden view.



The sketch of the building

FACTS & FIGURES

Area **1260 m²**

Number of Storeys **3**

Services **Architecture**

Status **Ongoing**



The garden serves as an oasis throughout the winter when using terraces and outdoor spaces are less actual. The house is allocated in a way to take maximum advantage of outdoor space and create an amazing stop to spend sphere time on fresh air.



From visual & non-visual connection to nature, thermal variability, presence of water, dynamic & diffuse light, connection to the natural system, material connection to nature, biomorphic forms and patterns to complexity and order the design incorporates different patterns of biophilic design to achieve maximum comfort for residents, for their harmony and well-being.

Spectrum / Residential projects / 2018—2023

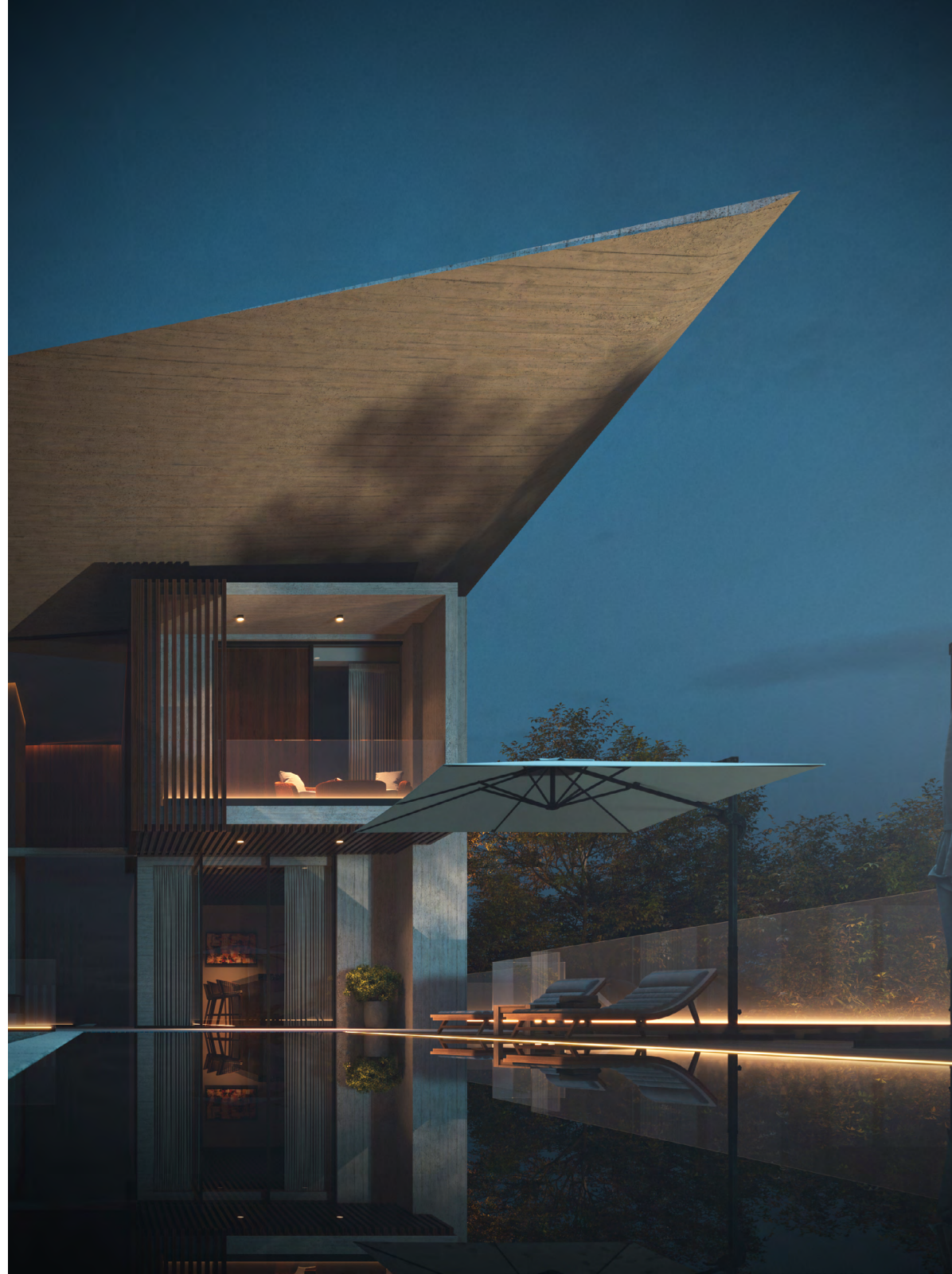
05

Lisi Dwelling

Tbilisi, Georgia

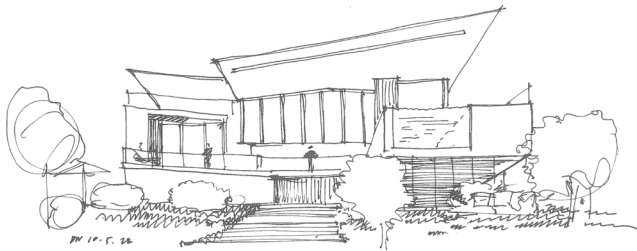
The primary objective of the project was to design a cutting-edge and sleek residence that combines functionality and comfort, reflecting the modern luxury lifestyle of the owners.

The architectural structure of the house features dynamic shapes and is adorned with full-height glazing on both sides, offering breathtaking panoramic views of the surrounding landscape, visible through the adjacent treetops.



MAIN FEATURES

Positioned at the rear of the house is an infinity pool, adding an element of elegance. Upon entering the house, one is greeted by the visually pleasing sight of a minimalist raw concrete structure. However, as soon as the main door is crossed, the true essence of the house is revealed, as the interior seamlessly blends with the exterior, creating a truly unique ambiance.



The sketch of the building

FACTS & FIGURES

Area **968 m²**

Number of Storeys **3**

Services **Architecture**

Status **Completed**



The initial impression of simplicity and mystery at the entrance is quickly surpassed by the presence of concrete structural elements that define the architecture of the house. These elements stand out both on the façade and within the internal spaces.



The house establishes a strong connection with the outdoors through the inclusion of patios and terraces at various levels. These outdoor spaces complement and interact with the interior, forging a harmonious relationship with the surrounding environment.

Spectrum / Residential projects / 2018 — 2023

06

Private House

Tbilisi, Georgia

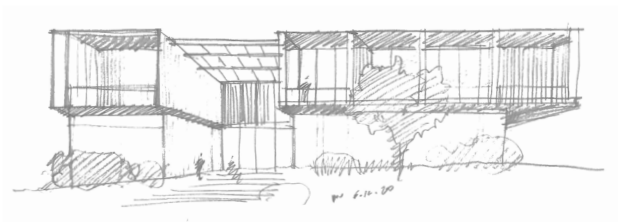
The residential house seamlessly integrates into its surroundings while meeting the needs and lifestyle of a large family. The arrangement and positioning of the building's openings were carefully planned to immerse the occupants in the environment, and the landscaping enhances the connection with nature.

The patio, measuring 50 sq. m, is a key feature of this residential house project. It is positioned on the South-East part of the house and offers a captivating design that brings a sense of serenity and integrates nature into the home's aesthetic.



BESPOKE ELEMENTS

Enclosed garden spaces act as personalized nature retreats, seamlessly blending with the adjacent interior spaces through glass walls. The roof of the patio is made of steel structure and glass, providing ample sunlight while offering protection from rain. A staircase built into the slope leads to the main floor entrance, where the living room, dining room, kitchen, cabinet, storage, guest bedroom, and bathrooms are located. The design of the second floor takes into account the importance of outdoor spaces and privacy.



The sketch of the building

FACTS & FIGURES

Area **890 m²**

Number of Storeys **3**

Services **Architecture, Landscape design**

Status **Ongoing**



The roof of the patio is made of steel structure and glass, providing constant sunlight and protection from the rain. The Facade The facade is balanced with glass combined with stainless steel panels, which gives the house its modernistic, contextual feel. Stainless steel panels change color according to climatic conditions, which makes the facade look different at different times.



The facade of the house strikes a balance between glass and stainless steel panels, lending it a modern and contextual feel. The stainless steel panels change color based on climatic conditions, giving the facade a dynamic appearance.

The backyard is adorned with lush landscaping, strategically placed trees, and shrubs, providing privacy and natural beauty. Thoughtfully positioned lighting fixtures create a warm and inviting atmosphere in the evening, allowing for the enjoyment of the pool and outdoor space even after sunset.

07

Private Residence

Tbilisi, Georgia

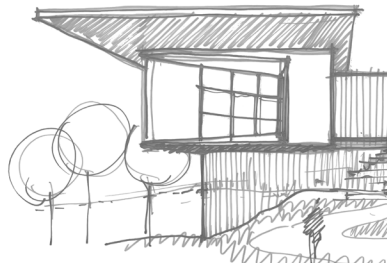
The residential house project is situated on a plot of land with a dynamic terrain and boasts a stunning view of the Lisi Hills. The design incorporates large panoramic windows and sleek, flat rooflines, giving it a minimalist and modern aesthetic.

To add warmth and character, natural materials such as stone, wood, steel, and textured plaster are used in the finishes. These floor-to-ceiling windows flood the interiors with natural light and allow the beauty of the surrounding nature to permeate the living spaces.



FUNCTIONAL DISTRIBUTION

The house features a unique layout, including a beautiful staircase space that connects the first floor, housing the living room, dining room, kitchen, and two bedrooms, with the basement floor. The basement floor comprises an additional bedroom, a bathroom, a children's room, and a study with access to the garden. The garden itself boasts a pool and a gazebo, creating a serene and enjoyable outdoor space.



The sketch of the building

FACTS & FIGURES

Area **1000 m²**

Number of Storeys **2**

Services **Architecture, Landscape design**

Status **Completed**



The architectural design of the house places significant emphasis on the roofline. It embraces a modern approach with flat roofing, which seamlessly connects with the terrace at the main entrance. The flat roof serves as a contrasting element to the surrounding topography, providing stability to the structure and allowing it to stand out.



One of the key features of this house project is the seamless integration of indoor and outdoor spaces. The elegant pool serves as a focal point, enhancing the connection between the interior and exterior.

This harmonious blend creates a tranquil and inviting haven, where homeowners can fully appreciate the beauty of their surroundings and indulge in a lifestyle of leisure and comfort.

Spectrum / Residential projects / 2018—2023

08

Private Residence

Tbilisi, Georgia

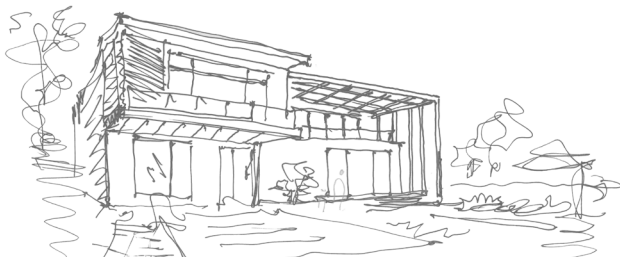
The residential house project is situated on a plot of land with a dynamic terrain and boasts a stunning view of the Lisi Hills. The design incorporates large panoramic windows and sleek, flat rooflines, giving it a minimalist and modern aesthetic.

To add warmth and character, natural materials such as stone, wood, steel, and textured plaster are used in the finishes. These floor-to-ceiling windows flood the interiors with natural light and allow the beauty of the surrounding nature to permeate the living spaces.



UNIQUE DESIGN ELEMENTS

The exterior of the house features a balanced combination of wood and local textured limestone, which gives it a modern yet contextual aesthetic. One of the standout features of the house is its oversized terrace, which invites the occupants to step outside and enjoy the breathtaking views of Tbilisi. The design follows a minimalist approach, radiating a warm, earthy, and traditional essence that creates a soothing visual experience.



The sketch of the building

FACTS & FIGURES

Area **1260 m²**

Number of Storeys **3**

Services **Architecture**

Status **Ongoing**



The seamless integration of wood, glass, and stone creates a captivating interplay of natural and modern elements, resulting in a harmonious and visually stunning composition that enhances the overall aesthetics and character of the house.



The project serves as a testament to exceptional architectural design. The seamless integration of indoor and outdoor spaces, the inclusion of luxurious amenities, and the meticulous attention to detail all contribute to making this residence truly remarkable and inviting.

Spectrum / Residential projects / 2018—2023

09

Private House

Tsavkisi, Georgia

The individual private house in Tsavkisi is a testament to modern design principles and a deep appreciation for outdoor living. The project showcases a modern architectural design that stands out in contrast to the local environment.

The predominant material used in the construction of this house is concrete that creates a robust contrast with the surrounding. The masculine color scheme with a subtle touch creates a unique experience. The mood takes priority both for the façade and interiors.



INTERIORS

Filled with a combination of moody colors over high-end contemporary furnishings and some special examples of statement lighting, the interior looks like secret-style lairs. Black-on-black fabrics ensure the textural experience is just as powerful as the visual one. These interiors unveil the gift of modern luxury- living in a state of comfort and convenience, wherein every detail serves one purpose- the comfort and well-being of the owner. Different decorative materials fill the ample, light-filled space to create a unique and refined environment that brides modern aesthetics with a touch of luxury.



The sketch of the building

FACTS & FIGURES

Area **1500 m²**

Number of Storeys **2**

Services **Architecture, Landscape design**

Status **Ongoing**



The meticulous architecture, choice of materials, and attention to detail create a harmonious blend of functionality, aesthetics, and comfort. The exterior of the house is adorned with intricate details that evoke a sense of uniqueness and sophistication.



One of the notable features of this residential property is the meticulously designed yard where the living spaces are situated. Outdoor areas, such as a well-designed patio or garden, provide additional opportunities for relaxation and enjoyment.

The presence of a distinctive pool within the yard creates a delightful ambiance for gatherings and adds a touch of uniqueness to the house's exterior. The spaces are further enhanced with carefully selected plants and decorative elements that seamlessly integrate with the surrounding environment.

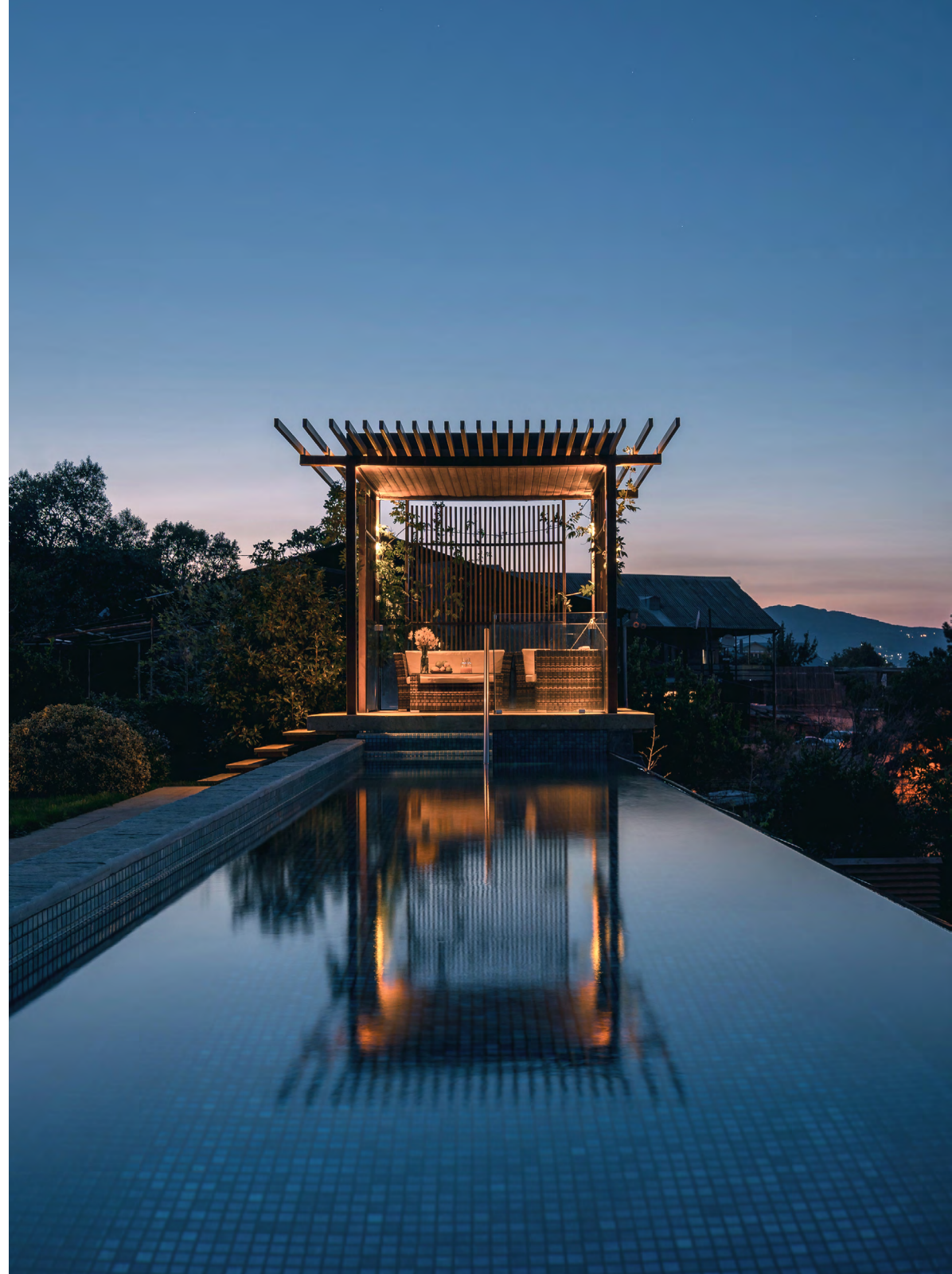
10

Tskneti Dwelling

Tskneti, Georgia

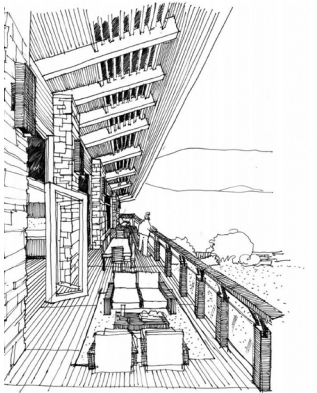
The individual private house in Tsavkisi is a testament to modern design principles and a deep appreciation for outdoor living. The project showcases a modern architectural design that stands out in contrast to the local environment.

The predominant material used in the construction of this house is concrete that creates a robust contrast with the surrounding. The masculine color scheme with a subtle touch creates a unique experience. The mood takes priority both for the façade and interiors.



INTERIORS

The rich wooden accents and natural tones bring soothing warmth and weight to the entire interior. The tonal combination creates a look of confidence, edge, and utmost sophistication. Upon a first look into the living room, you are instantly struck by the warm wood ceiling and sweeping wide windows. The Colour is calming, furniture is minimal. There is nothing overcomplicated to distract the eye and exhaust the mind.



The sketch of the building

FACTS & FIGURES

Area **350 m²**

Number of Storeys **3**

Services **Architecture, Interior Design,
Procurement, Construction**

Status **Completed**



The staircase design is open and light, free of risers to allow the natural daylight and garden view to penetrate from the vast window at its side. Skylights above the staircase give plenty of sun to both levels of the home.



One of the main features of the interior, an extensive collection of works of art owned by the client, blends naturally in different spaces and creates an integral part of the design. All the decorations belong to different periods of time and various cultures. They possess character and deliver stories from the past.

Crafted with natural materials—metal, stone, copper, and wood—the decorations bring a special aura to every room of the house through their antiquity, ornaments, and characteristics of different cultures.

Spectrum / Residential projects / 2018 — 2023

11

Private House

Tbilisi, Georgia

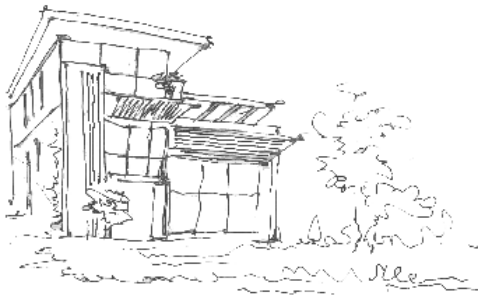
Nestled in the serene landscape of Lisi, this individual private house stands as a testament to contemporary design harmonizing with nature. Every aspect of its architectural composition has been meticulously crafted to complement the local environment, creating a seamless integration between the house and its surroundings.

The extensive use of wood as the primary material imbues the house with a natural elegance, showcasing a deep appreciation for the beauty of the region.



SOPHISTICATED DESIGN

The individual private house in Lisi is a stunning example of modern design embracing the local environment. From its wooden exterior that harmonizes with the natural surroundings to its thoughtfully designed interior spaces, every aspect of the house has been carefully crafted to create an atmosphere of warmth, elegance, and sophistication. It offers a truly exceptional living experience that combines the best of contemporary design and the serenity of nature.



The sketch of the building

FACTS & FIGURES

Area **2361 m²**

Number of Storeys **3**

Services **Architecture**

Status **Ongoing**



Upon approaching the house, one is greeted by a striking façade that captivates with its attention to detail. Thoughtfully incorporated design elements, such as large windows and unique geometric patterns, play with light and shadow, casting an ever-changing interplay of sunlight throughout the day.



Outside, the house is surrounded by lush greenery, blending seamlessly with the natural landscape. A carefully landscaped garden provides a peaceful retreat where residents can enjoy the beauty of nature and indulge in moments of tranquility.

A spacious patio or deck area offers the perfect setting for outdoor gatherings, creating a seamless transition between the interior and exterior spaces.

12

Private Residence

Tbilisi, Georgia

The house's design seamlessly integrates with its surroundings, harmonizing with the existing context. It has been carefully tailored to the terrain, ensuring a natural fit within the landscape. The primary goal of the design is to provide a comfortable living environment that caters to the needs of a modern family and their lifestyle.

With its clean lines and geometric shapes, the architecture exudes a modern ambiance. These contemporary design elements, combined with the use of natural decorative materials, contribute to an inviting and cozy atmosphere, promoting a sense of comfort and ease in daily living.



EMPHASIS ON WELL-BEING

The house features wide terraces, thoughtfully designed to facilitate a more enjoyable experience of outdoor living. These spacious outdoor areas provide a comfortable setting for relaxation and recreation, allowing residents to fully embrace the freshness of the open air. To enhance the interior space, large stained glass windows have been incorporated, allowing an abundance of natural light to flood the rooms. These windows also offer captivating views of Lisi Lake, allowing residents to appreciate the surrounding natural beauty.



The sketch of the building

FACTS & FIGURES

Area **902 m²**

Number of Storeys **2**

Services **Architecture**

Status **Ongoing**



The house maximizes its use of space by incorporating a basement that serves various functions. This utilization of the basement area ensures that the house provides ample room for different activities and purposes. Notably, the project emphasizes energy efficiency, incorporating sustainable principles to reduce its environmental impact.



The design prioritizes the principles of a healthy home, considering factors that contribute to the well-being and comfort of its occupants. By seamlessly blending with nature, the house establishes a harmonious relationship with its surroundings, further enhancing its appeal and connection to the environment.

13

Private Villa

Tskneti, Georgia

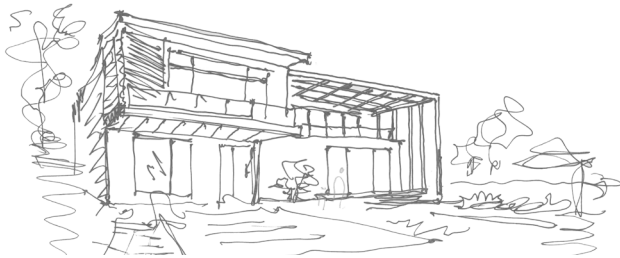
The design of the three-story private house in Tskneti aimed to maintain the natural surroundings and establish a seamless connection between nature and the living space. The project prioritized the integration of comfort and domesticity, emphasizing a harmonious relationship between the interior and the external landscape.

The meticulous attention to detail is apparent throughout the entirety of the house, as seen in the careful selection of materials, finishes, and architectural elements.



INTERCONNECTION

The integration of the living room with the terrace allows for a seamless transition between indoor and outdoor living spaces, enabling residents to enjoy the beauty of nature from within the comfort of their home. In addition to the living room, the kitchen and cabinet spaces are thoughtfully designed to have convenient access to the yard. This arrangement allows for easy movement between the indoor and outdoor areas, facilitating a harmonious flow of activities.



The sketch of the building

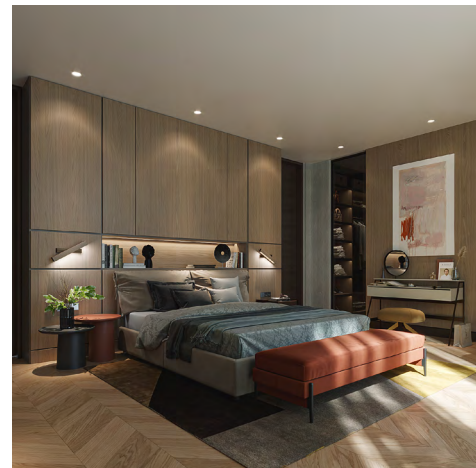
FACTS & FIGURES

Area **971 m²**

Number of Storeys **3**

Services **Architecture**

Status **Ongoing**



The reflective pool, located along the terrace, in front of the living room, emphasizes the aesthetics of the harmonious fusion of nature and living spaces. During the design process of the project, special attention was paid to the correct orientation of the building, warming and selection of the right materials to achieve maximum energy efficiency.



The project exemplifies a design philosophy that emphasizes the preservation of the existing landscape while creating a living space that seamlessly integrates with its surroundings. The house not only offers comfort and functionality but also provides residents with an opportunity to embrace and appreciate the natural beauty that surrounds them.

Spectrum / Residential projects / 2018 — 2023

14

Private Residence

Saguramo, Georgia

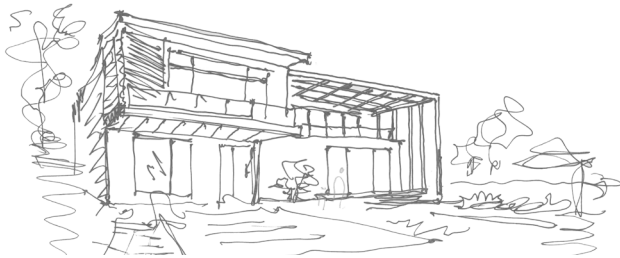
The project of the private house in Saguramo exemplifies the perfect amalgamation of the natural pinewood landscape and the architectural structure.

The primary objective of the project was to preserve the existing landscape in its entirety and create a house where the connection between nature and living spaces is seamlessly integrated. The design of the house embodies the fusion of nature and interior elements, following a trend of comfort and homeliness.



OUTDOOR LIVING

The project aimed at harmonizing the exterior and interior, erasing the boundaries between them and creating unique space for indoor-outdoor living. The relationship between the indoor rooms and the external landscape is particularly notable through the expansive glass wall of the living room on the ground floor. This opening connects to the terrace, offering a picturesque view of the surrounding pinewood landscape.



The sketch of the building

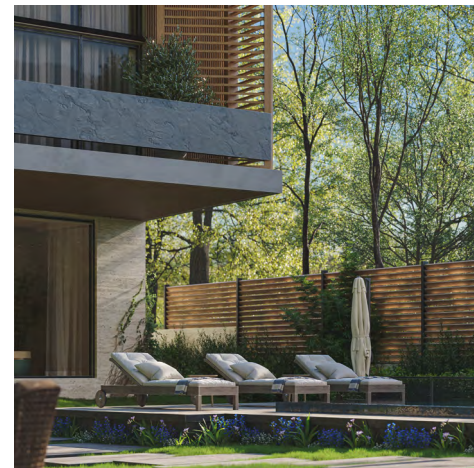
FACTS & FIGURES

Area **1200 m²**

Number of Storeys **2**

Services **Architecture**

Status **Ongoing**



Adjacent to the living room, there is a reflective pool along the terrace that enhances the aesthetic appeal of the harmonious blend between nature and living spaces. Throughout the design process, careful consideration was given to the correct orientation of the building, as well as the selection of materials to ensure optimal energy efficiency.



The outdoor space surrounding the pool has been thoughtfully designed to promote relaxation and entertainment. A generously sized patio or deck area provides ample space for outdoor furniture, loungers, and dining sets, creating an ideal environment for hosting gatherings or simply enjoying a peaceful afternoon by the water.

15

Wood Cabin

New York, USA

With the goal to harmoniously blend into the existing landscape, we have created a wooden cottage that is perceived to be an indistinguishable part of the environment.

The wooden cottage was designed with the intention to connect the project with nature, take advantage of the backyard views and create a cozy atmosphere for the owners to escape urban hectic environment. The contrast between the wild nature and a safe, cozy interior space is emphasized throughout, strongly guiding the overall experience.



HARMONY WITH NATURE

Simplicity, natural materials and minimalism are utilized to deliver peace and harmony. The overall experience is to offer owners a feeling of detachment from the outside world. Straight lines, modern architectural elements in combination with natural materials and a minimalistic approach to not exhaust the eye, creates unique and tranquil atmosphere.



The sketch of the building

FACTS & FIGURES

Area **148 m²**

Services **Architecture Interior Design**

Status **Ongoing**



The glass curtain wall while bringing ample sunlight into the interior and presenting mesmerizing views, at the same time erases line between the interior and exterior. The house was designed with attention to energy efficiency and incorporates healthy home standards.



The wooden cottage nestled in nature is a charming architectural gem that harmoniously blends with its serene surroundings. This rustic retreat offers a peaceful escape from the hustle and bustle of city life, immersing residents in the beauty of the natural environment.

Each and every detail of the house is designed to deliver maximum comfort and coziness to the owner couple and enable them to relax, escape everyday fuss and comfortably spend leisure time on fresh air.

SOCIAL MEDIA

Follow us



GET IN TOUCH

www.spectrum.ge / info@spectrum.ge

Tbilisi, Georgia, Tabukashvili street #27

+995 555 60 32 00