

# HOSPITALITY

Re-Imagined

*Designed  
with Guests in Mind*



# HOSPITALITY

Re-Imagined

*Designed  
with Guests in Mind*



## COMMITTED TO CREATING HEALTHIER

At SPECTRUM we treat every hospitality project with the intention to create a unique, memorable and bespoke environment that will best serve guest needs. Our projects are characterized by strong conceptual legibility, ingenuity, and a rigorous approach to detailing – all underpinned by the principles of humane, enduring, sustainable design and never-ending innovation.





# METHODOLOGY AND APPROACH

## APPROACH

One of the key aspects and characteristics of our methodology is the deep understanding and consideration of the project location, its traditions, culture and surrounding context.

This gives us the ability to clearly analyze the specific parameters of any given location, its function and create unique designs that can seamlessly blend within the given context. Thorough consideration of ecology, environment, local context and traditions are the core and start point for the formation of any project.

## CHARACTERISTICS

Our design work is characterized by strong conceptual design legibility, innovation and a rigorous approach to detailing

All underpinned by the principles of humane, enduring and sustainable design and never-ending technical innovation. We pride ourselves on delivering sustainable solutions, stimulating environments to extend boundaries with bold and bespoke design that rejuvenate society.

## INSPIRATION

Our design methodology evolves around seeking inspiration in nature whether it is texture, color, composition, lighting or general ambiance.

Design process and direction is often influenced by the surrounding context of the landscape as we admire all the nuances and details seeking to incorporate within our design.

## SUSTAINABILITY

Our design philosophy is based on deep respect and consideration for our planet's well-being and resources.

Spectrum is proud to create and advance sustainable, ecologically responsible environments and enrich our projects with the latest technological solutions that ensure sustainability and growth.



# ■ CREATING DESIGN STORY

## NEIGHBORHOOD HUES

STAINED  
GLASS



TRADITIONAL  
ARTWORK



TEXTURES &  
COLORS



CULTURAL  
ELEMENTS



CANOPY BY HILTON

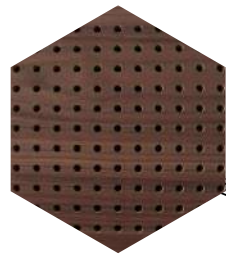
Tbilisi, Georgia



# ■ CREATING DESIGN STORY

ETHNICITY & TRADITION

TEXTURES &  
FORMS



TRADITIONAL  
ARTWORK



LOCAL  
MATERIALS



VILLA GODOLI

Kakheti, Georgia



# DIVERSITY FOUND IN DESIGN





# RADISSON COLLECTION

Tsinandali, Georgia

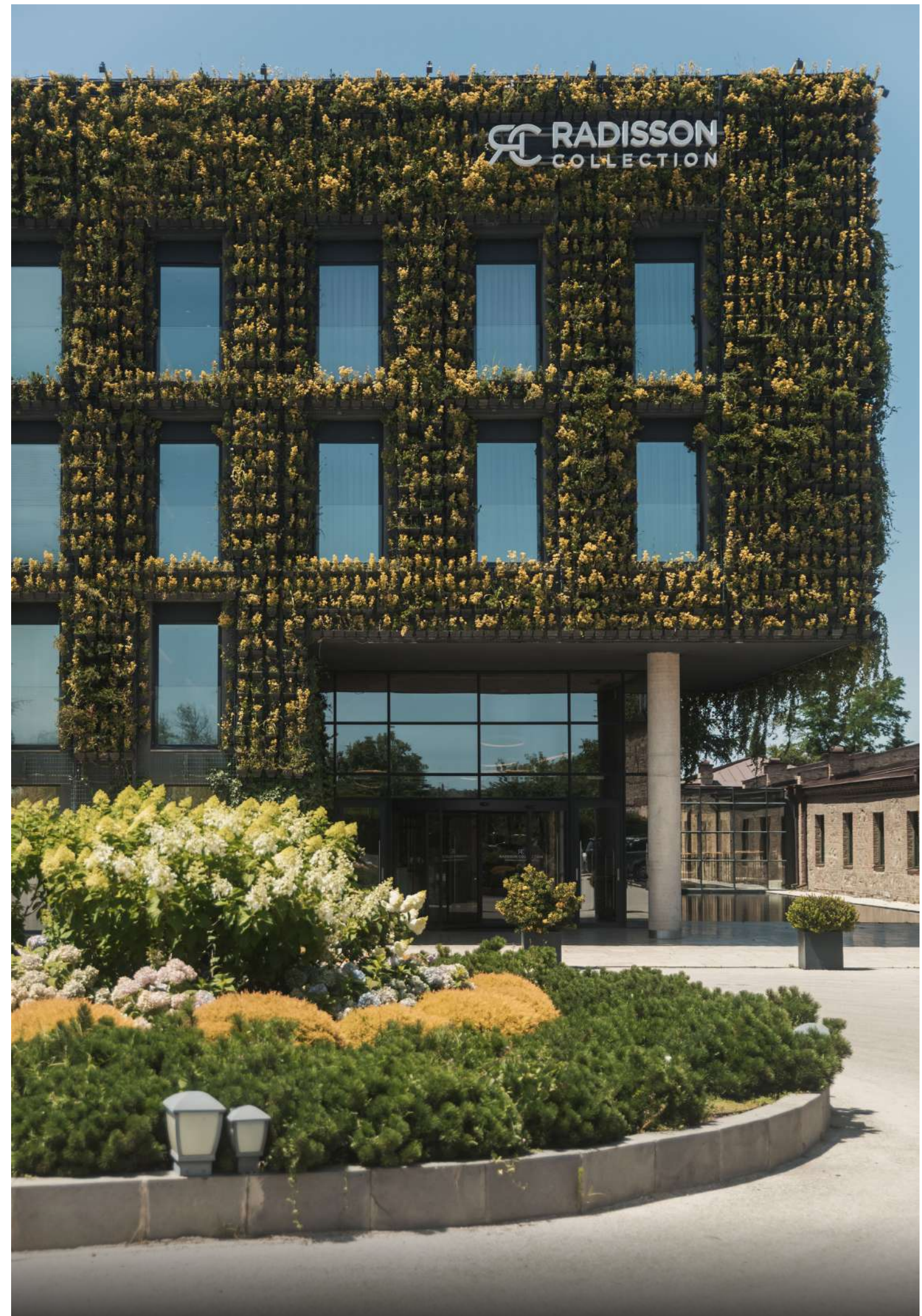
## FACTS & FIGURES

Site Area	2 500 m <sup>2</sup>
Collaborators	AECOM Georgia LLC
Scope	Green Facade, Construction Management



*Keiko*

SPECTRUM



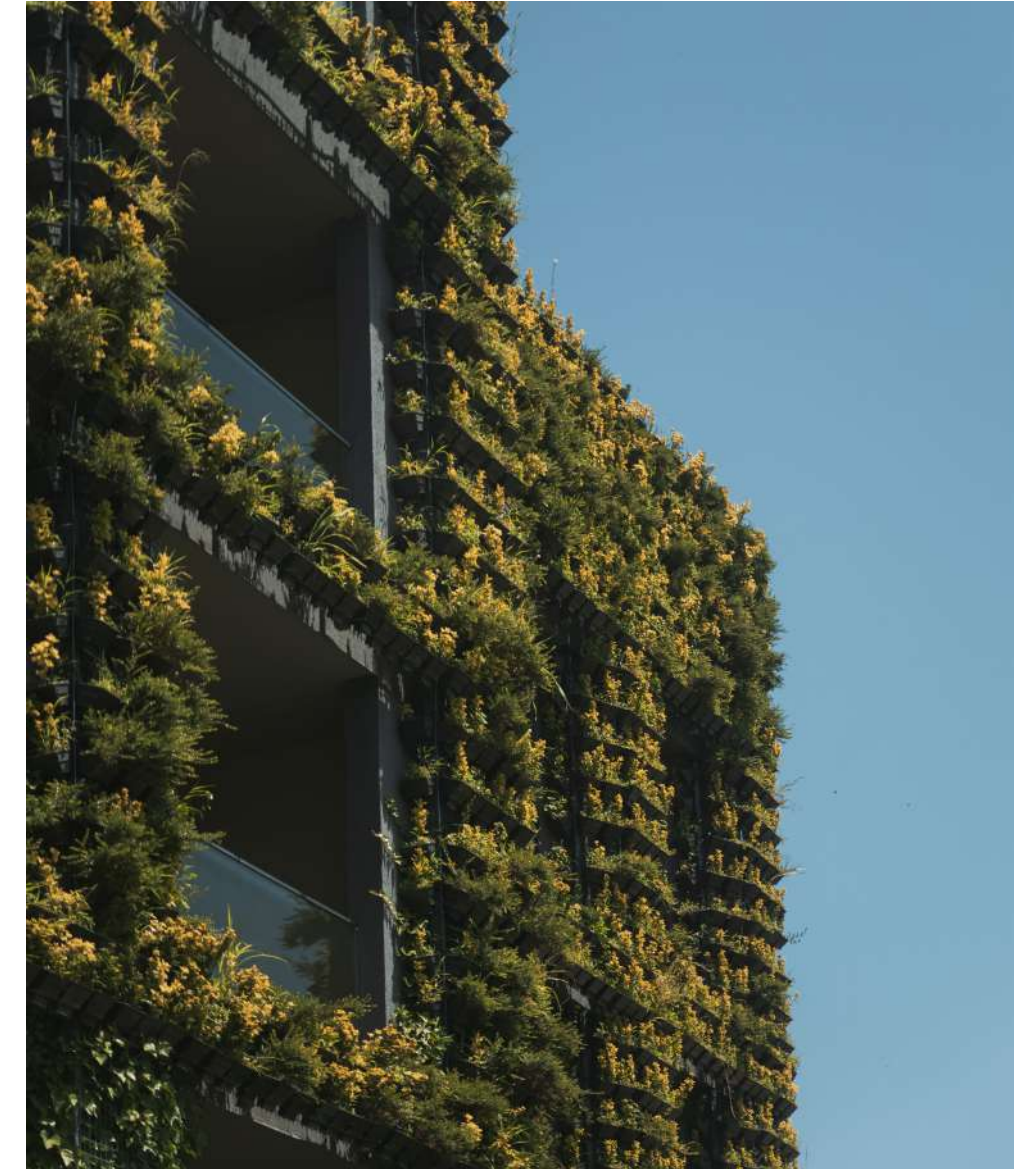
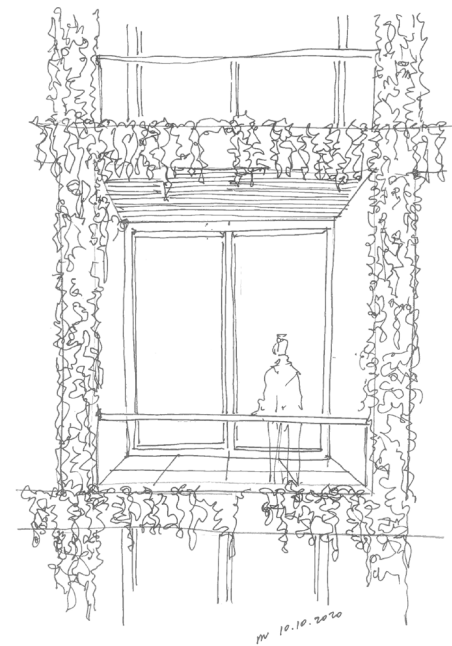


# BRIDGING HISTORICAL & MODERN



## GREEN FACADE

The green Facade of the “Radisson Tsinandali” Hotel makes the first building in Georgia fully covered in a natural green layer. It bridges new modern structures with historical context. The idea of having new structure disappear in the historical Chavchavadze garden was generated from the notation of not adding a new element to the garden, but rather creating the extension of the natural environment formed with a new green layer that surrounds the entire structure. Within the surrounding historical context, the idea of making the new building disappear was conveyed by screening the entire building in a seamless array of natural plantations.



## MAIN CONCEPT

The main concept of the design takes notion of the local context, the historical garden of Chavchavadze, ancient buildings existing at the location and the intention to seamlessly connect new hotel with the historical context. By coming up with the green façade, we have created the extension of the natural environment formed with a new green layer that surrounds the entire structure.





The green facade is the most striking element of the building as it contributes to bringing nature into the resort's landscape. It allows Radisson Hotel to reach far healthier living conditions for both visitors of the hotel and the wider surrounding.

---

### *Biophilic Touch*



# CLOUD 7 LIFESTYLE HOTEL

Yanbu, Saudi Arabia

## FACTS & FIGURES

Site Area	9 831 m <sup>2</sup>
Number of Keys	113
Scope	Architecture, Interior Design



*Hamood*

SPECTRUM



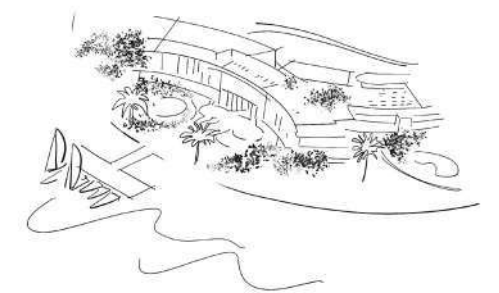
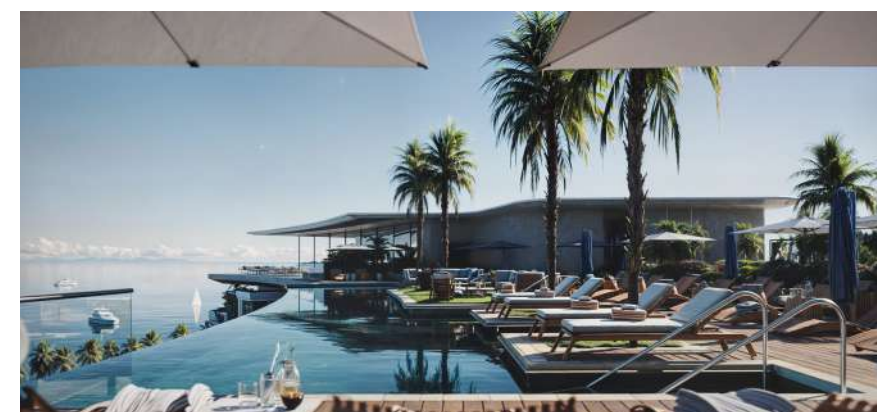


# THE NEW DESTINATION

## RESORT AESTHETICS

The project of the lifestyle hotel is developed alongside three upcoming projects of Beach Club, Diving & Visitor Center and the Beach retreat. Together an amazing ecosystem is created for leisure, relaxation and exploration.

Resort aesthetics, traditional and natural elements, quirky details will be used to create a memorable and demandable environment for different guest types. The building consists of G+3 floors and the rooftop. Huge atrium that creates a look through the hotel splits the building into two zones. On the ground floor are intellectually allocated public spaces.



## CONTEXT

With the modern interpretation of local style, lifestyle hotel introduces Yanbu's architecture to its visitors, which is characterized by natural raw materials, curved shapes and different textures. Building materials and styles are selected according to the rich cultural and historical heritage of the region.





The view of the Facade

## PROJECT OVERVIEW

Lifestyle Hotel seamlessly blends traditional and contemporary aesthetics, expressing a clear architectural identity through a central atrium dividing the building into two distinct zones. Locally-sourced stone, wood, glass, and metal create a harmonious balance between historical charm and modern design. Passive environmental strategies, including shading elements and optimized glazing, ensure thermal comfort and energy efficiency. Facade details subtly incorporate traditional motifs inspired by local craftsmanship, creating dynamic visual textures. At night, strategic lighting highlights the hotel's key architectural features, enriching the guest experience with elegance and sophistication



# GUESTROOMS TRANSMITTING THE 3 SOULS OF YANBU

## AL BAHAR - BY THE SEA

Sea, seaport and fishermen's life are representations of the guestroom. AL BAHAR aesthetics are incorporated into the interior making it explorable, delightful and memorable, while considering the ultimate guest experience.

## AL-SINA'IYA - INDUSTRIAL

The industrial city is home to the largest industrial port on the red sea, the second largest industrial complex in the kingdom, and the fourth largest crude oil refinery in the world. this guestrooms are characterized by the mix of materials such as concrete, metal, leather and wood creating explorable and trendy atmosphere for guests.



The view of the AL BAHAR guestroom



The view of the AL - SINA'IYA guestroom





The view of the Guestroom

**AL NAKHAL - YANBU OASIS**

Yanbu AL NAKHAL spans more than 2,000 years, is one of the most important historical areas of Saudi Arabia. The old city known for its springs, farms and old charm holds a lot of stories and historical facts. The mesmerizing color scheme is enriched with a green oasis bringing life and a spark of energy to the area!

*Delightfully comfortable*



## JOONTOS - RESTAURANT DESIGN WITH AIM OF TOGETHERNESS

A group of people joined for a  
common purpose

Unique and vibrant destination that offers a tasteful lifestyle  
experience with shared dining, providing a blend of  
gastropub-inspired menu items and Michelin-star-level  
cuisine in a relaxed, homey, and approachable setting.



Tasteful living with shared dining experience





# GUESTROOMS TRANSMITTING THE 3 SOULS OF YANBU

## AL BAHAR - BY THE SEA

Sea, seaport and fishermen's life are representations of the guestroom. AL BAHAR aesthetics are incorporated into the interior making it explorable, delightful and memorable, while considering the ultimate guest experience.

## AL-SINA'IYA - INDUSTRIAL

The industrial city is home to the largest industrial port on the red sea, the second largest industrial complex in the kingdom, and the fourth largest crude oil refinery in the world. this guestrooms are characterized by the mix of materials such as concrete, metal, leather and wood creating explorable and trendy atmosphere for guests.



The view of the AL BAHAR guestroom







The view of the Lobby

## PROJECT OVERVIEW

Lifestyle Hotel seamlessly blends traditional and contemporary aesthetics, expressing a clear architectural identity through a central atrium dividing the building into two distinct zones.

Locally-sourced stone, wood, glass, and metal create a harmonious balance between historical charm and modern design. Passive environmental strategies, including shading elements and optimized glazing, ensure thermal comfort and energy efficiency.

Facade details subtly incorporate traditional motifs inspired by local craftsmanship, creating dynamic visual textures. At night, strategic lighting highlights the hotel's key architectural features, enriching the guest experience with elegance and sophistication



# BAHEEJ WELLNESS RESORT

Yanbu, Saudi Arabia

## FACTS & FIGURES

Total Area	10 000 m²
Number of Keys	250
Scope	Architecture
	Interior Design
	Landscape Design



Aiko

SPECTRUM





# THE ESSENTIAL RETREAT



## ELEGANCE & SOPHISTICATION REDEFINED

Wellness resort, strategically positioned to offer stunning sea views, immerse guests in the island's beauty from the moment they enter their sanctuary.

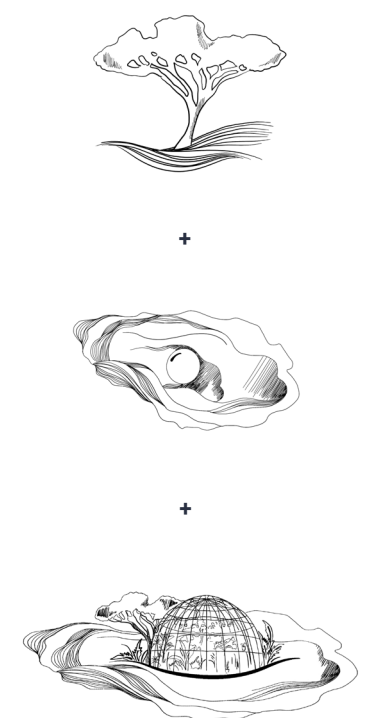
Embracing the captivating beauty of nature's marvel, our design mirrors the shell's organic textures and soothing color gradients. Soft hues of iridescent whites, subtle pearly tones, and gentle oceanic blues interplay, reflecting the shell's serene and timeless allure. Textures echo the intricate details found upon the

shell's surface, with delicate patterns and layered textures evoking the graceful undulations and roughened edges. These design elements combine to create an ambiance that encapsulates the essence of tranquility and elegance, inviting guests to immerse themselves in the serene embrace of coastal beauty while experiencing the peaceful refuge of our retreat.



## SENSE OF ANTICIPATION

The design philosophy ensures that guests are greeted with a sense of anticipation, reserving the stunning sea panoramas as a delightful surprise once inside their private haven. This thoughtful arrangement not only heightens the sense of arrival but also enhances the overall guest experience, adding a touch of intrigue and delight to their stay.







The retreat's architecture features soft curves and natural materials, creating a harmonious flow between indoor and outdoor spaces. This sanctuary offers a perfect escape, where the blend of nature and design fosters a deep sense of well-being and rejuvenation.

---

*The perfect escape*



## A GROUP OF PEOPLE JOINED FOR A COMMON PURPOSE

The restaurant, strategically located to maximize sea views, blends elegant seashell aesthetics with maritime charm. Inspired by the local coastline, the interior features a harmonious mix of coastal elements, creating a memorable dining experience. Guests can enjoy stunning vistas both indoors and on the terrace while indulging in exquisite cuisine, complemented by Charcood's bold flavors.



Tasteful living with shared dining experience





# EMBRACE TRANQUILITY

The wellness retreat lobby is a sanctuary of tranquility and refinement. It features a harmonious blend of natural materials and modern aesthetics. Soft, earthy tones dominate the space, with warm woods and stone accents creating a grounding effect. Plush, comfortable seating is arranged in intimate groupings, inviting guests to relax and converse. Subtle, ambient lighting complements the space, offering a gentle glow that enhances the overall sense of calm and well-being.



The view of the Lobby







Guestroom interiors offer serene luxury, harmonizing effortlessly with the island's natural beauty. Neutral tones and organic textures create a calming ambiance, enhanced by abundant natural light from expansive windows. Flexible layouts ensure comfort and adaptability, while open-concept bathrooms with elegant fixtures provide relaxation and privacy. Each room is thoughtfully detailed, featuring refined furnishings and artisanal touches that reflect the island's charm, inviting guests into a tranquil and intimate retreat.

---

*The perfect escape*



# HOTEL INDIGO BY IHG

Riyadh, Saudi Arabia

## FACTS & FIGURES

Site Area	1 800 m <sup>2</sup>
Number Of Keys	140
Scope	Architecture, Interior Design



Noura

SPECTRUM



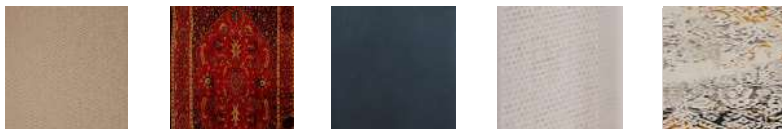


# DETAILS THAT MATTER

The attention to detail is evident in the carefully curated art installations that adorn the walls, telling the stories of the local community through visual narratives. These pieces serve not only as decorative elements but as windows into the culture and history that define the destination.



The view of the lobby



The view of the guestroom



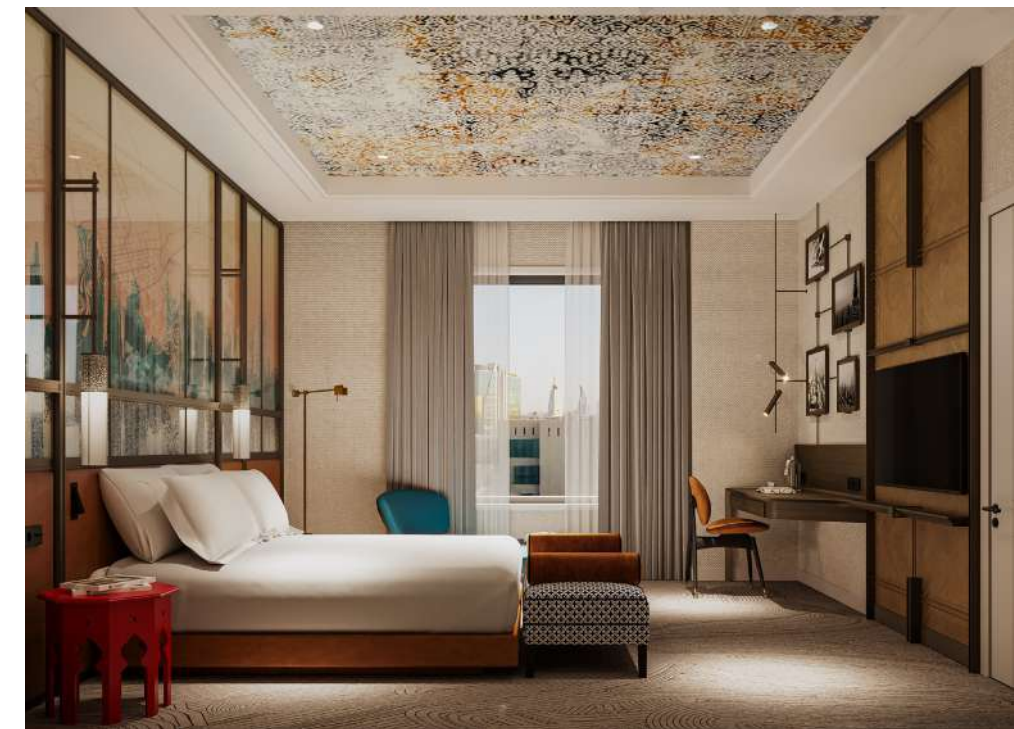
# TELLING THE STORY OF THE NEIGHBORHOOD



## EXPERIENCE ARTISTRY AND COMFORT

Our primary goal was to tell the story of the neighborhood through design, with every element meticulously curated to convey a sense of place. The interior spaces resonate with a distinctive personality, often drawing inspiration from the local history, art, and architecture. Guests find themselves surrounded by a living canvas that mirrors the spirit of the community, fostering a sense of connection and belonging.

The space comes alive with the playfulness of tinted glass dividers, casting a kaleidoscope of hues that dance and mingle. Guests can immerse themselves in a lively atmosphere as the vibrant glass dividers seamlessly blend functionality with aesthetics, creating a memorable and visually stunning experience. This restroom goes beyond the ordinary, inviting its guests to indulge in a moment of comfort and creativity.



## DESIGNING A STORY

We have crafted a design story for the Indigo Hotel in Riyadh that involves blending local culture, architectural elements, and modern design principles to create a compelling narrative. At Indigo Hotel Riyadh, every detail has been thoughtfully designed to offer a unique and memorable experience.





The view of the Restaurant

French-Lebanese Restaurant at Indigo Hotel Riyadh is more than just a restaurant – it's a vibrant destination where Riyadh's rich culture and dynamic energy come together. We invite you to immerse yourself in a sensory experience that celebrates tradition with a modern twist, where every meal is an occasion and every visit is a vibrant adventure.

*A sensory journey where tradition meets modern flair*



## HOTEL INDIGO RIYADH POOL: VIBRANT OASIS OF CULTURAL CHARM

Dive into the vibrant pool at Hotel Indigo Riyadh, a refreshing space where contemporary design meets local cultural flair. Bright mosaic patterns, artistic wall murals, and playful sculptures of colorful flamingos create a lively and engaging atmosphere.

Surrounded by plush, patterned loungers and vibrant decor, this indoor oasis embodies the hotel's commitment to celebrating tradition with a modern twist. Natural light floods the space through expansive skylights, enhancing the welcoming and vibrant ambiance.

The pool at Hotel Indigo Riyadh is more than just a leisure spot—it's a cultural escape designed for relaxation and enjoyment.



View of the Pool







The facade of Hotel Indigo beautifully blends cultural narratives and neighborhood motifs through modern architectural expression. Inspired by traditional patterns, it features geometric perforations and organic curves, creating an engaging interplay of light and shadow.

Graceful entrance arches evoke historical architecture, symbolizing the blend of heritage and contemporary style. Carefully detailed columns anchor the design, reflecting local craftsmanship.

Polished metal, textured stone, and glass materials enhance cultural depth, while landscaped greenery connects architecture with nature. A bold sculptural piece highlights local artistry, making the facade a meaningful landmark for visitors and locals alike.



# CANOPY BY HILTON

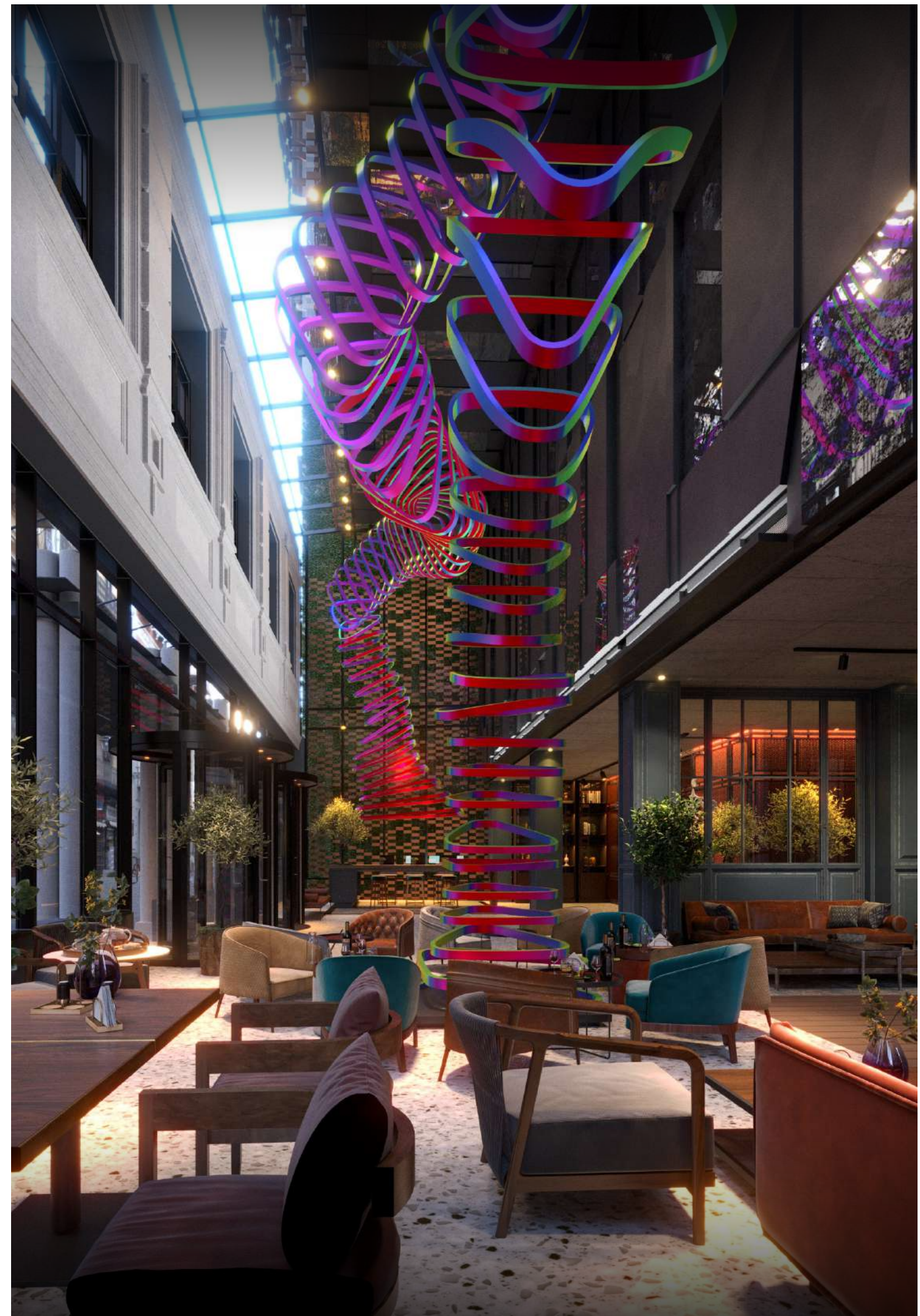
Tbilisi, Georgia

## FACTS & FIGURES

Site Area	3 200 m <sup>2</sup>
Number of Keys	114
Services	Architecture, Interior Design



SPECTRUM





# UNIQUE ATMOSPHERE INFUSED WITH LOCAL CHARACTER



## THE CONCEPT

With the design of Canopy Tbilisi have challenged ourselves to transmit Canopy approach of guest experience into our design elements, enriching with cultural vibrancy ensuring guests' stay unique and memorable. We incorporated the accents of the neighborhood into the design, In essence, we have INVITED THE CITY inside the guest rooms, giving the guest the opportunity to unwind and feel welcomed in 1500 years old Tbilisi with its rich history and unparalleled cultural values, and well-known hospitality.



## CREATING NEW DESTINATION IN TOWN

The welcoming and adaptable public spaces represent a free flow that seamlessly transforms into one to another. While considering Canopy standards, each space is infused with contextual elements, neighborhood, cultural inspirations and local art. Carefully selected and designed furniture, accessories, textures, and materials make all just fit together.





The main architectural feature of the restaurant is the glass ceiling. It maximizes natural daylight. This structural element reduces the need for artificial lighting. In addition, it creates an open and airy environment, a key characteristic of Modern architecture. The interior has spaces that include both individual and communal tables. It provides possibility of both private dining and group gatherings, which is a core aspect of Modern architecture.

The interior materials have been selected with sustainability and durability in mind. The combination of wood, metal, and glass creates a balance, while brass lighting elements contribute illumination across the space. Glass panels on the walls enhance light control and show visual rhythm to the interior. Large murals are parts of a decorative element.



# WHERE DESIGN COMES TO LIFE

The guestroom layout was meticulously designed to make the most of the available space while creating a comfortable and welcoming atmosphere. The design focused on both the aesthetic appeal and practicality of the room, resulting in a well-planned and efficient space. To create a bright and open atmosphere, an open bathroom layout was implemented to allow natural sunlight to flow into the room. The use of honest, natural, and warm materials was carefully selected to provide a tranquil and memorable experience, creating a space that guests will want to come back to!



The view of the bedroom



The view of the bathroom





The aim of the project is to create a design that responds to the standards of Radisson Blu while considering the surrounding context. The interior design is characterized by a combination of classic and modern styles, with all elements—shape, light, color, texture, and pattern—coming together to create Resort aesthetics. A significant part of the interior design is the terrarium, adding a special character to the interiors.



Our design vision directly relates to the neighborhood the project is located in. The spaces are welcoming and adaptable to the needs of the guests. Instead of relying on one standard prototype, location and surroundings drive design and environment decisions. We truly believe, that our detailed consideration and mix of spaces, activities and functions will make Canopy Tbilisi a new destination that will positively affect the city.

Neighborhood Hues



CREATING SPACES  
FOR LEISURE & RELAXATION



# HYATT

Tbilisi, Georgia

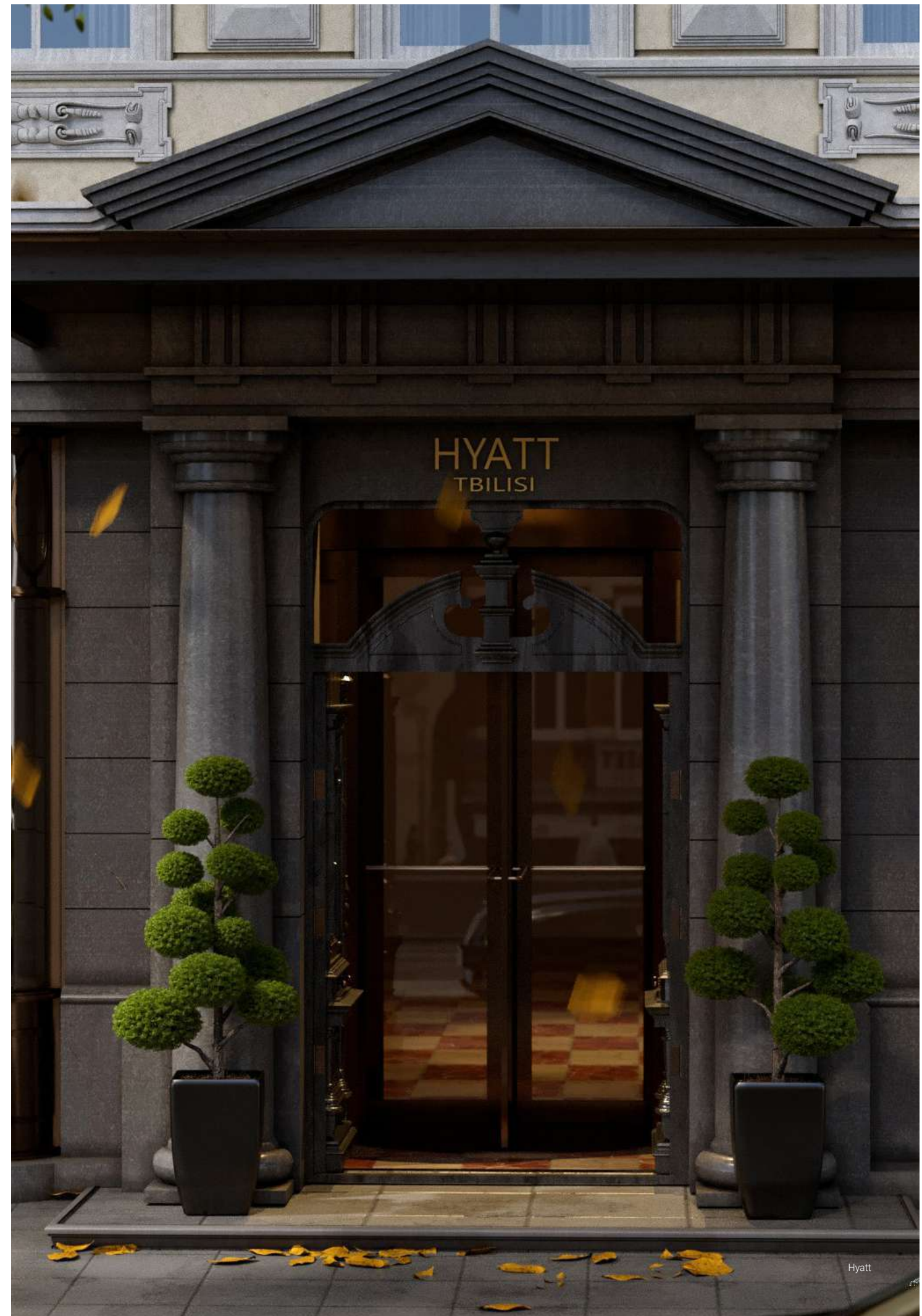
## FACTS & FIGURES

Site Area 3 302 m<sup>2</sup>  
Client "Rustaveli Property"  
Collaborators Reardonsmith Architects, Cubicon, Elektra,  
HB Teknik, Dinamic Projeys, Karina LLC, Lynn Hunt  
Scope Architecture



Matthew

SPECTRUM



Hyatt

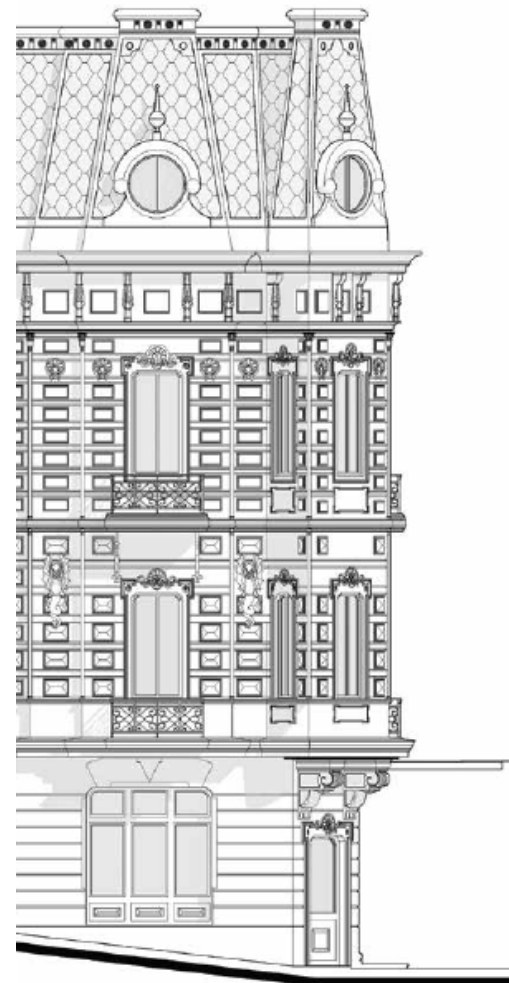


# BALANCING OLD AND NEW



## HISTORICAL CONTEXT

Located in the heart of Tbilisi new Hyatt Rustaveli hotel perfectly coordinates physical functions and emotional aesthetics, radiating the architecture and interior. The architectural vision for Hyatt balances an international and cultural feel with the dynamic nature of the historical and diverse buildings of Rustaveli Avenue. The historical facade of the building was kept and added 4 story volumes, which seamlessly links with the general architecture of the space. The added volume carefully responds to the streetscape and urban realm, with strong aesthetics responding to the wider city context. All the ornaments used on the historical facade will be fully restored and maintain an existing aesthetic value.



## DESIGN SUPPORTING PREMIUM LIFESTYLE

The keynote for the design is contemporary opulence: respect for traditional craftsmanship and high-quality materials, allied with a modern urban sensibility. The Hotel offers exclusive facilities to its visitors to enjoy the ultimate in five-star luxury living. Every aspect of the design is carefully considered to create effortlessly luxurious living spaces that exceed expectations.





The view of the main entrance

Within the surrounding historical context, the main challenge was to set the dialogue between old and new and balance historical value with modern requirements and aesthetics. The entire approach is infused with the respect for traditional craftsmanship and historical value allied with a modern urban sensibility

---

## *Connecting the Past and Future*



# PETRA SEA RESORT

Tsikhisdziri, Georgia

## FACTS & FIGURES

Site Area	20 137 m <sup>2</sup>
Client	LLC Petra Sea Resort
Collaborators	Engineering; AG Melco;
Services	Architecture



SPECTRUM





## WHERE MODERN DESIGN MEETS SUSTAINABILITY

The architectural design of the Petra features dual towers with distinctive and sustainable design practices. The project is divided into two blocks, A and B. It offers 421 modern apartments designed to blend luxury with sustainability. The architectural design has the panoramic views of the city, creating a harmonious balance between comfort, modern aesthetics, and environmental responsibility.

The architectural design principles prioritize sustainability, creating welcoming communal spaces such as plazas, courtyards, and lounges. Residents have the perfect spaces to socialize. By integrating thoughtful architectural design into every element of the development, Pullman Residences offers a living experience that celebrates modernity while being rooted in tradition.







The view of the Terrace

## TERRACE ARCHITECTURE AND DESIGN

Petra's terraces blur the line between indoor living and the natural world. Designed with sweeping curves and transparent railings, they open up to panoramic views of the Black Sea. Lush greenery, private pools, and natural materials create serene outdoor retreats that feel like extensions of the home. Whether for quiet reflection or social moments, each terrace is a carefully crafted space of comfort, elegance, and connection to nature.



# OUTDOOR POOL & GARDEN RETREAT

Surrounded by lush palm groves and vibrant landscaping, the outdoor pool and garden area offers a serene escape immersed in nature. The organically shaped pool is framed by soft curves and gentle textures, creating a tranquil atmosphere for relaxation and leisure. Sun loungers float effortlessly in shallow waters, while garden paths wind through tropical flora and sculpted greenery.

This verdant oasis merges luxury with a biophilic design approach, where every element—from shade structures to flowering plants—is thoughtfully curated to enhance wellbeing. It's more than a pool; it's a peaceful sanctuary where residents can unwind, connect, and feel in harmony with their surroundings.



The view of the Pool







The view of the building

### THE CROWN OF THE TOWER

The top floors of the building represent the pinnacle of modern living—elevated both in height and design. With uninterrupted panoramic views of the Black Sea and surrounding landscape, these upper levels offer a rare sense of openness and serenity.

Encased in curved glass and framed by flowing terraces, the architecture mirrors the natural rhythm of the sea. Residents of these exclusive floors enjoy unmatched privacy, light-filled interiors, and a daily connection to the horizon—where sky meets ocean in a seamless blend of beauty and calm.



# ENVI BEACH RESORT

Paje Beach, Zanzibar

## FACTS & FIGURES

Site Area 10 370 m<sup>2</sup>

Number of Keys 21

Scope Architecture, Landscape Design



*James*

SPECTRUM





# COZY ELEGANCE AND UNMATCHED COMFORT



## UNPARALLELED UNIQUENESS

The meticulous layout and avant-garde design of the villas intricately weave together a tapestry of comfort, warmth and exhilaration, forming an ambiance that captivates guests and enables them to truly savor the resort’s unparalleled uniqueness. Every nook and cranny has been thoughtfully considered, fostering an atmosphere where relaxation seamlessly converges with the thrill of new experiences. It’s a sanctuary where every villa is a testament to exclusivity, inviting guests to embark on a journey where they can completely lose themselves in the distinctive allure of the resort’s architectural masterpiece.



## SERENE AND RELAXING AMBIANCE

The layout and design of the villas create a cozy, comfortable, and exciting atmosphere, allowing guests to appreciate the resort’s uniqueness fully.

The 22 villas of Paje Beach Resort are crafted to provide a serene and relaxing ambiance, drawing inspiration from coastal aesthetics. The envisioned interiors radiate simplicity, creating a memorable atmosphere that ensures maximum comfort for potential guests.





## ARCHITECTURE & DESIGN OF PAJE BEACH RESORT

Inspired by Zanzibar's nature, culture, and artisanal traditions, Paje Beach Resort offers an authentic luxury experience.

The minimalist yet culturally-rich architecture harmonizes seamlessly with the environment, creating inviting spaces that reflect Zanzibar's charm and heritage.



## WHERE NATURE, CULTURE, AND COMFORT UNITE

The resort's interior design focuses on creating spaces that are both functional and beautifully reflective of Zanzibar's natural and cultural elements. A soft, earthy color palette complements the surrounding tropical greenery, enhancing the sense of relaxation and rejuvenation. The materials used throughout the resort – from the natural wood and stone to the woven textiles – are chosen to create a natural, cozy atmosphere, providing warmth and comfort while allowing the beauty of the local environment to shine.



The view of the Bathroom







The view of the Guestroom

Each room is designed to be an intimate retreat, with panoramic windows that offer views of the lush landscape or the ocean. The spacious, open layouts create a sense of freedom and tranquility, while thoughtful touches of local craftsmanship in the form of bespoke furniture and handcrafted decorations ensure that guests feel immersed in the island's vibrant culture.



# OFFERING A BACKDROP FOR MEMORABLE EXPERIENCES

## AN AMBIANCE THAT BLENDS SOPHISTICATION WITH ZANZIBAR'S SERENE BEAUTY

public spaces of Paje Beach Resort are designed to offer a seamless blend of relaxation and interaction.

The lobby welcomes guests with an expansive, airy design that incorporates natural light and lush greenery, setting a serene tone for their stay. Comfortable seating areas with chic, contemporary furnishings are arranged to encourage social interaction and relaxation.

Soft, ambient lighting from these oversized fixtures highlights the details of handcrafted wooden furniture and woven decor elements, while large windows and sliding glass doors seamlessly connect the interior with the stunning outdoor views. The seating arrangements, including plush chairs and elegantly crafted wooden tables, cater to both intimate dinners and social gatherings, ensuring comfort and sophistication.



## ADDING UNIQUE CHARACTER AND DEPTH

Each space is thoughtfully designed to add unique character and depth, seamlessly blending natural materials with the local charm of Zanzibar. The result is an environment that feels both distinctive and inviting, enhancing every moment of the guest experience.



# RADISSON COLLECTION

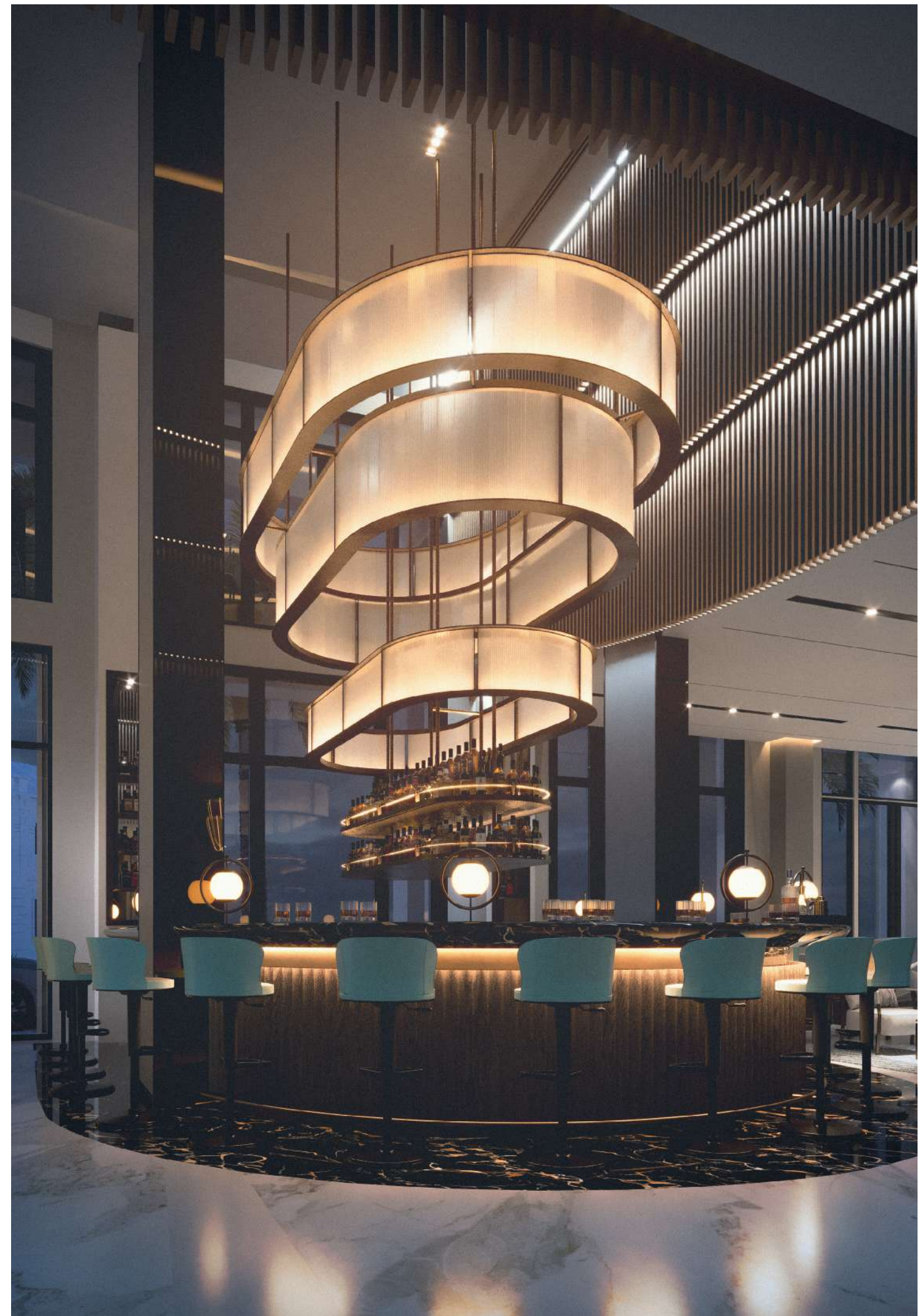
Sochi, Russia

## FACTS & FIGURES

Client	AR Group
Number of Keys	144
Scope	Architecture, Interior Design



SPECTRUM





# PREMIUM LIFESTYLE MEETS REMARKABLE SOPHISTICATION



## PUBLIC SPACES

Each space is designed with careful thought for the function, practicality and the sense it should evoke. From the lobby, bar, and restaurant to bedroom suites - planning, shapes, forms, textures and color pallets all support the intention to deliver a proper sense of place; A place where premium lifestyle meets sophistication, areas with authentic local influence supporting the vibrant social scene and memorable experiences. The elegant and adaptable public spaces represent a free flow that seamlessly transforms into one to another. While considering Radisson Collection standards, the layout is offered with the careful thought about the guest's comfort and their memorable experience. Every piece of furniture, accessories, textures and materials are carefully selected and designed to deliver a premium lifestyle with remarkable sophistication.



## THE HISTORICAL CONTEXT

Radisson Collection Sochi is located on the territory of the Krasmashevsky sanatorium, a unique complex on the Black Sea Riviera, in the center of Sochi. The design aims to deliver a timeless style, while guaranteeing comfort and convenience for guests regardless the purpose of their stay. The look and feel of affordable luxury, modern elegance, laconic minimalisms will be delivered by a selection of natural forms and materials, creating a timeless ambiance.



## FEEL THE BREEZE OF THE BLACK SEA RIVIERA

Premium lifestyle meets  
Remarkable sophistication

The notion of coastal aesthetics of Black Sea Riviera in line with the look & feel of the premium business hotel guide selection of forms, textures and materials. At first glance minimalistic style leaves a special charm, sense of luxury and sophistication to the visitors. Natural materials are extensively used throughout the hotel as a common design language. All materials, fixtures, furniture and accessories are carefully selected to deliver a memorable guest experience.



The view of the bathroom







The view of the Restaurant

At first glance minimalist style leaves a special charm, sense of luxury and sophistication to the visitors. Natural materials are extensively used throughout the hotel as a common design language. All materials, fixtures, furniture and accessories are carefully selected to deliver a memorable guest experience.

---

### ***Authentic & Unique Ambiance***



# NEXT COLLECTION

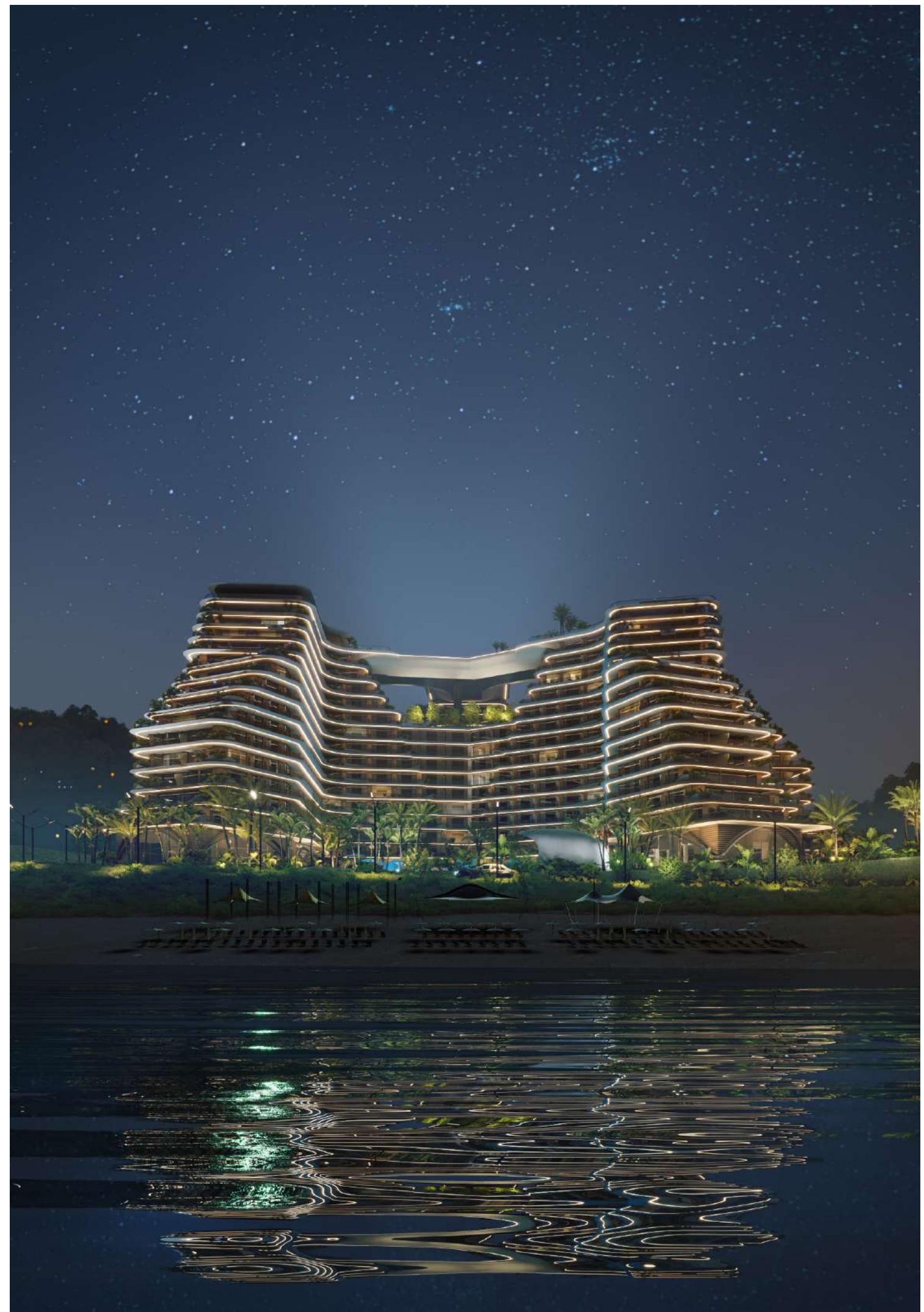
Batumi, Georgia

## FACTS & FIGURES

Site Area 20 366 m<sup>2</sup>  
Client NEXT Group  
Services Architecture, Landscape Design



SPECTRUM





# BIOPHILIC APPROACH TO MODERN ARCHITECTURE

The design of the multifunctional complex “Next Collection” is distinguished by organic architecture that seamlessly blends with the Green Cape landscape, perfectly fits the topography of the area and creates spaces that are both functional and visually appealing. The design embraces natural forms, materials, and patterns, fluid and organic design in order to create a building and inner spaces that are both functional and visually striking. The result is a structure that appears to have grown organically from its surrounding, rather than being imposed upon it.



The view of the Pool







The view of the building

The exterior of the building is characterized by organic architecture - sweeping curves and undulating shapes, creating a sense of movement and fluidity that is at once dynamic and harmonious with the surrounding landscape. The building is clad in smooth, white panels that create a sleek, futuristic look that is both elegant and modern.

## ***Movement & Fluidity***



# COASTAL AESTHETICS

Next Collection Residence is a remarkable example of interior design and architecture seamlessly integrated into the coastal environment, bringing together modern aesthetics and functional perfection. The concept of the project focuses on maximizing proximity to the seaside while meeting both comfortable and elegant living standards. Through Interior Design solutions that prioritize relaxation and visual harmony, the project effectively captures the essence of coastal living.



The view of the bedroom







The view of the Terrace

## DYNAMIC TRANSPARENCY AND FLUID TERRACES

Sliding doors introduce dynamic transparency into the apartments, allowing interiors to flow seamlessly into expansive views. These design elements merge indoor comfort with outdoor freshness, amplifying the spatial openness. Terraces are thoughtfully curated as secure yet intimate retreats, inviting residents to savor serene moments enveloped by gentle sea breezes, providing a refined sanctuary from urban rhythms.



# RADISSON BLU

Gonio, Georgia

## FACTS & FIGURES

Site Area 30 452 m<sup>2</sup>  
Number of Keys 576  
Scope Interior Design



SPECTRUM





# DESIGNED FOR MEMORABLE GUEST EXPERIENCE



## THE CONCEPT

Radisson Blu Resort & Residences interior design harmoniously balances the brand standards, contextual elements and the notion of creating memorable and distinguishable space. The details used in the interior design create a sophisticated and elegant environment. The aim of project is to create a design that responds to the brand standards and at the same time takes the notion of the surrounding context. The interior design of the project is characterized by a combination of classic and modern styles. All the elements - Shape, light, color, texture, and pattern come together to create resort aesthetics. A significant part one of the interesting features of the interior design is the terrarium, adding a special character to the space.



## MATERIALS AND TEXTURES

Natural and warm materials inspired by coastal aesthetics are used to create a trendy and memorable space. Clean lines, thoughtful use of space and contextual elements are set to deliver meaningful & memorable guest experiences. Each space is infused with stylish elements, coastal inspiration and biophilic touch. The design leverages the latest design trends, meets the evolving guest needs, and positions the for continuous future relevancy. The use of materials and textures serve one purpose – to harmoniously interact, come in line with Radisson Blu Resort standards and form a very unique, fresh and delightful hotel experience.



# COASTAL AESTHETICS

In the guestrooms the palette of honest, natural and warm materials are used to create a tranquil and memorable space, the place guests enjoy spending time at. Clean lines, thoughtful use of space and contextual elements are set to deliver memorable guest stay and quality experiences. The guestroom layout was thoughtfully considered to take maximum advantage of the given space, and while carefully crafting the visual side, simultaneously making it well-planned and efficient.



The view of the bedroom







The view of the lobby

The aim of the project is to create a design that responds to the standards of Radisson Blu while considering the surrounding context. The interior design is characterized by a combination of classic and modern styles, with all elements—shape, light, color, texture, and pattern—coming together to create Resort aesthetics. A significant part of the interior design is the terrarium, adding a special character to the interiors.

### *All in a Flow*



# VILLA GODOLY

Kakheti, Georgia

## FACTS & FIGURES

Collaborators Domson, Art Studio LLC

Scope Interior Design, Construction Management



*Paul*

SPECTRUM





# CREATING UNIQUE LOCATION WITH AUTHENTIC TOUCH



## TRANSMITTING CULTURE AND TRADITION

The modern interpretation of ethnic style of the “Villa Godoly” hotel facade introduces Kakheti’s architecture to its visitors, which is characterized by monolithic facades, strict lines and textures. Building materials and styles were selected according to the rich cultural and historical heritage of the region.

The tower of the building is covered with cobblestone, while the horizontal and vertical brick inserts are used as details. Balconies and arches correspond to the proportions of the historic Kakhetian architecture. As for the windows, they are very accented and decorated with frames typical for the region. This facade represents the inspiration and commitment resulted from strong links between ethnicity and modernity, while it’s design comes in line with the overall ambiance and designation of the hotel.



## INTERIORS

Materials and textures of the interior were selected according to the rich cultural and historical heritage of the Kakheti region. Antique Georgian ornaments, furniture details, construction and finishing materials, that characterize this region are used in the interior, which harmoniously meets the standards of the modern hotel. The hotel interior is enriched with many interesting and functional areas, including a small museum, which is located on the basement floor.



# ADDING DEPTH THROUGH CONNECTIONS WITH THE PAST

## Creating memorable experience

The rooms are characterised by the details of the old Georgian furniture, rugs and light-coloured walls, which accurately match with modern style and create a unique character. The hotel “Villa Godoly” project also consists of the lounge, chimney space, restaurant and waiting areas, whose overall appearance is combined with the historical and natural environment, which creates an ideal holiday destination to the visitors.







The facade of the building

The architecture and interior design of the boutique hotel present a harmonious combination of old and new. Carefully planned landscape design adds a special flavor to the hotel.

---

### *The Synthesis of Old and New*





See you soon 